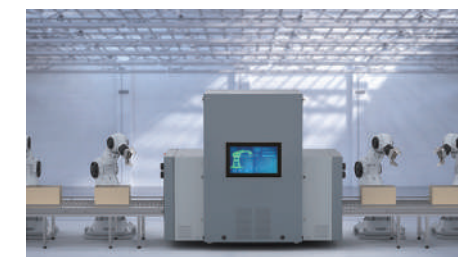


Specification

| | | HMI | | | | | | | |
|--------------------------|---|---|----------------|---|--|---|---------------|---------|--------|
| Model | AUHMI-910CP(H) | AUHMI-916CP(H) | AUHMI-921CP(H) | AUHMI-810BP(H) | AUHMI-816BP(H) | AUHMI-821BP(H) | | | |
| System | | | | | | | | | |
| CPU | 11th Gen. Intel Core i3/i5 | | | Intel Celeron J6412 | | | | | |
| Memory | 2 x 260-pin SO-DIMM up to 64GB DDR4 3200MHz | | | 1 x 260-pin SO-DIMM up to 32GB DDR4 3200MHz | | | | | |
| External I/O | USB | 4 x USB 3.0 type A | | | USB | 2 x USB 3.2 Gen2 type A ; 2 x USB 2.0, type A | | | |
| | Serial/Parallel | 1 x DB-9 connector, including: * 1 x RS-232(RTS, Rx, Tx, CTS), pin1 RTS/5V/12V selectable via jumper (COM1) * 1 x RS-232(Tx, Rx)/422/485(COM2) by Y Cable | | | Serial/Parallel | 1 x RS-232/422/485 (Default RS232; select via BIOS) | | | |
| | LAN | 1 x 1GbE, 1 x 2.5GbE LAN RJ-45 | | | LAN | 2 x 2.5 GbE LAN RJ-45 | | | |
| | Audio | 1 x Line-out | | | Audio | 1 x Line-out | | | |
| Expansion | Display | 1 x DP/HDMI | | | Display | 1 x DP, support DP++ | | | |
| | Onboard Expansion | 1 x Mini-PCIe slot (full size) 1 x M.2 E-key for WiFi/Bluetooth Module 1 x Nano SIM slot | | | 1 x M.2 B-key 1 x M.2 E-key for WiFi/Bluetooth Module | | | | |
| Storage Space | | | | | | | | | |
| Storage | 1 x M.2 M-Key 2280 (Support PCIe/SATA3) | | | 1x M.2 B-Key 2280 (Support SATA3) | | | | | |
| Display | | | | | | | | | |
| Display Type | 10.1" TFT-LCD | 15.6" TFT-LCD | | 21.5" TFT-LCD | 10.1" TFT-LCD | 15.6" TFT-LCD | 21.5" TFT-LCD | | |
| Max. Resolution | 1280 x 800 | 1366 x 768 | 1920 x 1080 | 1920 x 1080 | 1280 x 800 | 1366 x 768 | 1920 x 1080 | | |
| Max. Color | 16.7M | 16.2M | 16.7M | 16.7M | 16.7M | 16.2M | 16.7M | | |
| Luminance (cd/m2) | 350 | 1000 | 400 | 1000 | 500 | 1000 | 250 | 1000 | |
| View Angle (H/V) | 170/170 | | 170/160 | 160/160 | 178/170 | 170/170 | 178/178 | 170/170 | |
| Contrast | 800:1 | 1300:1 | 500:1 | 1000:1 | 1000:1 | 800:1 | 1300:1 | 500:1 | 1000:1 |
| Backlight Lifetime (hrs) | 30,000 | 50,000 | 50,000 | 50,000 | 30,000 | 50,000 | 50,000 | 50,000 | |
| Touch Screen | | | | | | | | | |
| Type | Projected Capacitive Touch | | | | | | | | |
| Interface | USB | | | | | | | | |
| Light transmission | Projected Capacitive Touch: 90% | | | | | | | | |
| Power | | | | | | | | | |
| Power Input | DC 9~36V | | | | | | | | |
| Power Consumption | 50W | 55W | 55W | 35W | 40W | 50W | | | |
| Mechanical | | | | | | | | | |
| Construction | Aluminum Die-casting Chassis | | | | | | | | |
| Mounting | Panel Mount, VESA Mount 100 x 100 | | | | | | | | |
| IP Rating | IP66 Compliant Front Bezel | | | | | | | | |
| Dimensions (mm) | 269 x 189 x 51 | 405 x 256 x 59 | 541 x 333 x 59 | 269 x 189 x 51 | 405 x 256 x 59 | 541 x 333 x 59 | | | |
| Net Weight (kg) | 1.8 | 3.7 | 6.3 | TBD | 3.7 | 6.5 | | | |
| Environmental | | | | | | | | | |
| Operating Temperature | 0~50°C / -20~60°C (optional for 10.1", 15.6") | | | | | | | | |
| Storage Temperature | -30~70°C | | | | | | | | |
| Humidity | 10 to 90%@ 40°C, non-condensing | | | | | | | | |
| Other | | | | | | | | | |
| Certificate | CE/FCC Class A | | | CE/FCC Class B | | | | | |
| Operating System | Windows 10 IoT, Windows 11 | | | | | | | | |

Specification

| | | Display | | | | | |
|--------------------------|---|----------------|----------------|-------------|----------------|---------|--|
| Model | AUHMI-110AP(H) | AUHMI-116AP(H) | | | AUHMI-121AP(H) | | |
| External I/O | | | | | | | |
| VGA | 1 x VGA | | | | | | |
| HDMI | 1 x HDMI | | | | | | |
| DP | 1 x DP | | | | | | |
| Audio | 1 x Line-in | | | | | | |
| OSD Control Membrane | 5 Keys at rear | | | | | | |
| Power Connector | 1 x 3-pin Terminal Block Connector | | | | | | |
| Others | 1 x USB type A for touch | | | | | | |
| Display | | | | | | | |
| Display Type | 10.1" TFT-LCD | | 15.6" TFT-LCD | | 21.5" TFT-LCD | | |
| Max. Resolution | 1280 x 800 | | 1366 x 768 | 1920 x 1080 | 1920 x 1080 | | |
| Max. Color | 16.7M | 16.2M | 16.7M | | 16.7M | | |
| Luminance (cd/m2) | 350 | 1000 | 400 | 1000 | 500 | 1000 | |
| View Angle (H/V) | 170/170 | | 170/160 | 160/160 | 178/178 | 170/170 | |
| Contrast | 800:1 | 1300:1 | 500:1 | 1000:1 | | 1000:1 | |
| Backlight Lifetime (hrs) | 30,000 | 50,000 | 50,000 | | 50,000 | | |
| Touch Screen | | | | | | | |
| Type | Projected Capacitive Touch | | | | | | |
| Interface | USB | | | | | | |
| Light transmission | Projected Capacitive Touch: 90% | | | | | | |
| Power | | | | | | | |
| Power Input | DC 24V | | | | | | |
| Power Consumption | 5.28W | | 12.9W | | 32.9W | | |
| Mechanical | | | | | | | |
| Construction | Aluminum Die-casting Chassis | | | | | | |
| Mounting | Panel Mount, VESA Mount 100 x 100 | | | | | | |
| IP Rating | IP66 Compliant Front Bezel | | | | | | |
| Dimensions (mm) | 269 x 189 x 51 | | 405 x 256 x 59 | | 541 x 333 x 59 | | |
| Net Weight (kg) | 1.6 | | 3.5 | | 6.3 | | |
| Environmental | | | | | | | |
| Operating Temperature | 0~50°C / -20~60°C (optional for 10.1", 15.6") | | | | | | |
| Storage Temperature | -30~70°C | | | | | | |
| Humidity | 10 to 90%@ 40°C, non-condensing | | | | | | |
| Other | | | | | | | |
| Certificate | CE/FCC Class A | | | | | | |



APLEX - Taiwan Headquarter

15F-1, NO.186, Jian Yi Road, Zhonghe Dist., New Taipei City, 235 Taiwan

Tel : +886-2-82262881
Fax : +886-2-82262883
e-mail : sales@aplex.com
URL: www.aplex.com



APLEX - USA

780 Montague Expy #404 San Jose, CA 95131

Tel: +1-669-999-2500
Fax: +1-669-999-2499
e-mail: sales@aplex.com
URL: www.aplex.com



APLEX - ShenZhen

5F-5B01/03, Shenzhou Computer Building, Madame Curie Avenue, Vanke City Community, Bantian Street, Longgang District, Shenzhen, Guangdong

Tel:+86-755-2664-7540-319
Fax:+86-755-2664-8326
e-mail: salescn@aplex.com
URL: www.aplexiot.cn



New Generation
Rugged HMI and Display

AUHMI Series



AUHMI Series

New Generation HMI for Smart Automation

APLEX AUHMI series is the new generation HMI for industrial automation. From features to product outlook design, we highly elevated overall functions. AUHMI is powered by Intel Tiger Lake and Elkhart Lake to provide high computing performance for smart manufacturing, factory automation, control and communication, SCADA and robotic applications, process control and so on.

Features

- Intel Tiger Lake / Elkhart Lake Processors
- Projected Capacitive Touch
- 2 x SO-DIMM DDR4 3200MHz, up to 64GB (9C)
- 1 x SO-DIMM DDR4 3200MHz, up to 32GB (8B)
- High Brightness 1,000 nits optional
- Aluminum Die-casting Construction
- M.2 and Mini-PCIe Expansion slots (9C)
- 1 x M.2 B-Key Expansion slot (8B)

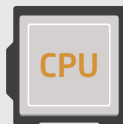
Camera (by project)

2 mm

Slim Design

Narrow Border

Narrow border and slim design make AUHMI not only looks more modern and stylish but also greatly decreases the system weight.



11th Gen. Intel Core i3/i5
Intel Celeron J6412



Fanless Design



IP66 Front Bezel



0°C~50°C
(-20°C~60°C optional)
Wide Range Temperature

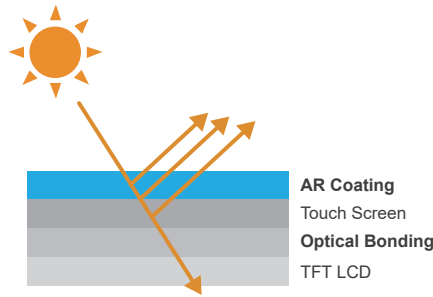
Sunlight Readable Solution (for option)



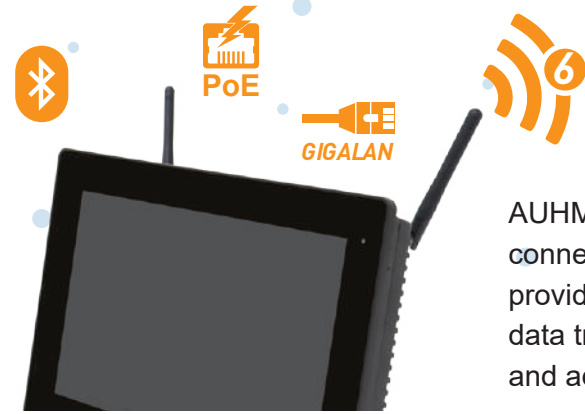
Auto Dimming



High Brightness



Optical Bonding & AR Coating



Internet Connectivity

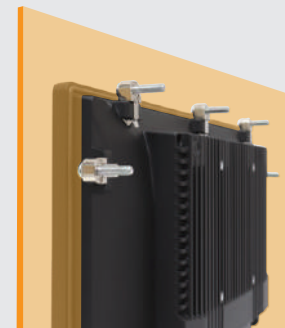
AUHMI supports various internet connectivity to support AIoT, and provides a smooth and high speed data transmission to connect peripherals and advanced control system.



4G LTE/5G M.2 Module (4 antennas)

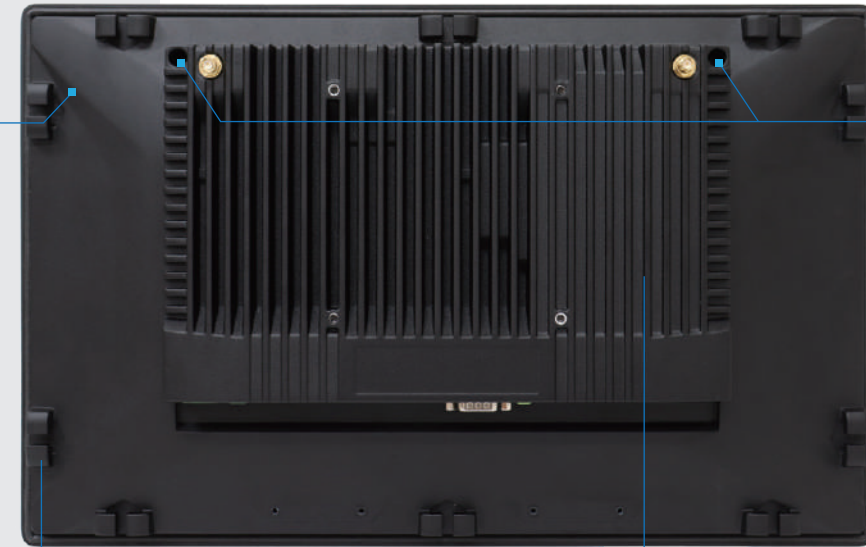
Modern Design

The special glinting light line with aluminum die-casting construction makes the outlook much more stylish.



Fast Mounting Kit (available above 15.6")

APLEX unique mounting kit highly protect the system from water or dirt ingress by having no fix-holes on the panel frame.



Modular and Easy Assembly

The computing system can be removed by only two screws, which is convenient and time-saving.

I/O Expansion Solutions

AUHMI supports TB-528 series expansion cards to satisfy different factory automation requirements. Being more customized and flexible, various I/O combinations are available!



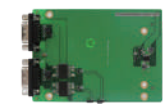
CAN Bus Module

TB-528CAN2



USB Module

TB-528U2



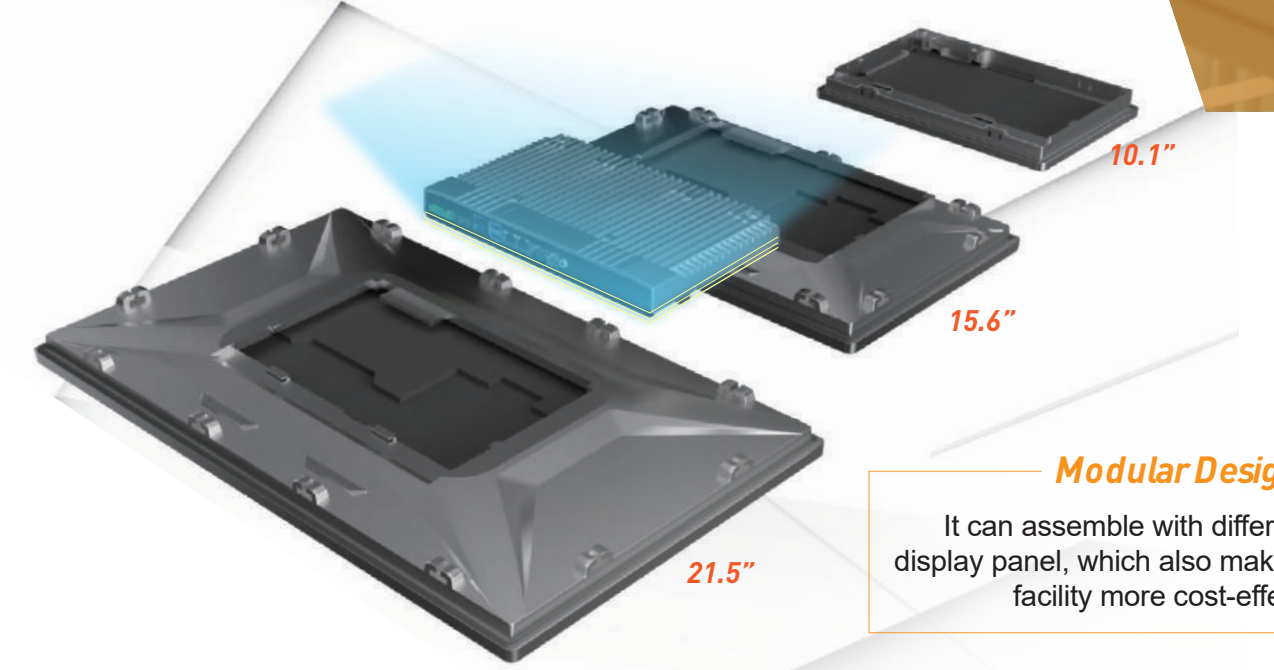
COM Module

TB-528C2I



PoE/LAN Module

TB-528E1U2UPOE



Modular Design

It can assemble with different sizes of display panel, which also makes maintain the facility more cost-effective.

Backup Battery



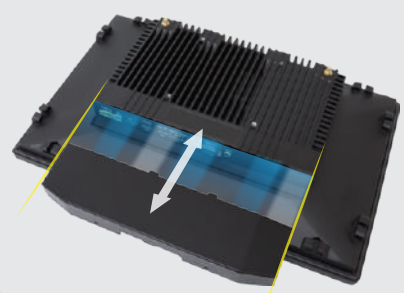
Prevent Data Loss

Prevent Hardware/Software Damage

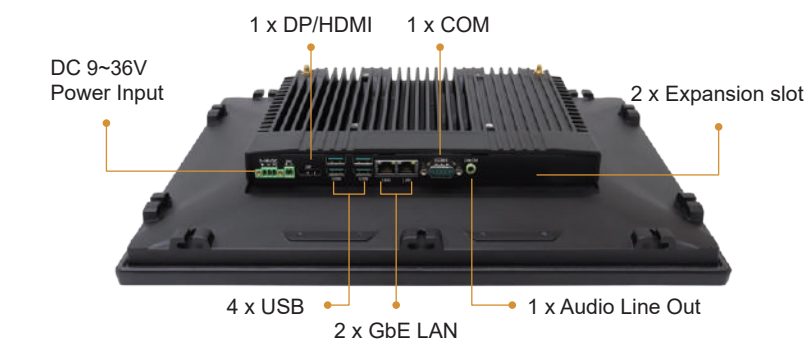
An optional backup battery provides emergency backup power source to protect data and the system for unexpected power interruption.

Cable Management (for above 15.6")

AUHMI HMI series supports cable cover to organize cables and provide a safe and reliable connection. It can protect cables from damaging, increase the lifespan and neaten the environment.



Panel PC



Display

