

# Products at a glance

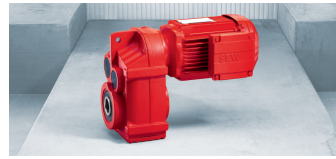
## Gearmotors



### R series:

#### Helical gearmotors

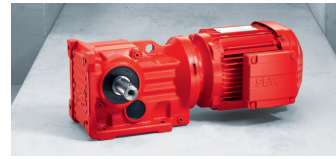
- Torque range: 31 to 20000 Nm
- Finely stepped sizes and gear ratios
- Available with reduced backlash
- Foot and flange-mounted



### F series:

#### Parallel shaft, helical gearmotors

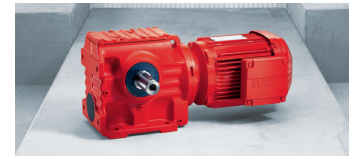
- Torque range: 87 to 20000 Nm
- Available with reduced backlash
- Various possible mountings and shaft connections
- Particularly suit process engineering and material handling applications



### K series:

#### Helical bevel gearmotors

- Torque range: 80 to 53000 Nm
- Available with reduced backlash
- Various possible mountings and shaft connections
- High efficiency of over 96%



### S series:

#### Helical worm gearmotors

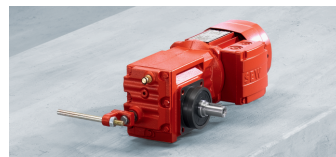
- Torque range: 32 to 4300 Nm
- Various possible mountings and shaft connections
- Extremely low noise operation
- Highly efficient compared to plain worm due to helical/worm combination



### W series:

#### SPIROPLAN® gearmotors

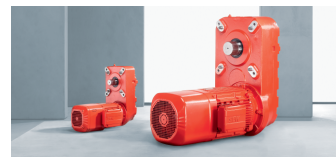
- Torque range: 19 to 600 Nm
- Various possible mountings and shaft connections
- Extremely low noise operation
- Compact and light weight aluminium housing
- Single, two and three stage sizes



### HW, HS, HK series:

#### Drives for electrified monorail system

- Torque range: 20 to 820 Nm
- Drives to C1 guidelines: low maintenance, low noise, smooth running and compact
- Can be used for wheel loads up to 40000 N
- Reduced power consumption



### G7 Hoist gear unit

- Suitable for hoist load ranging from 2.5 tons to 63 tons
- Allows the use of large drum diameters Ø140 mm – Ø405 mm
- Lightweight aluminium housings reduce the weight of the bridge and the moved mass
- Compact design to save mounting space

## AC Induction motors



### DR series:

#### AC Induction motors

- Range: 0.03 to 355 kW (varies in star or delta connections)
- Save space and costs due to compact design
- Comply with all international standards

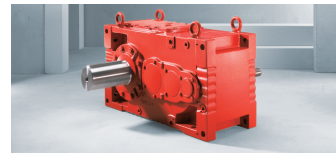


### DIB series:

#### AC Induction motors

- Range: 0.12 to 45 kW
- High quality and reliability
- Economy model for less critical requirements

## Industrial gear units



### Various MC, ML..2, X.e series:

#### Helical and bevel helical industrial gear units

- Torque range: 6 to 1480 kNm
- High power density and finely stepped sizes
- Flexible mounting options
- Customer specific adaptation



### PPK, P, P2.e and XP series:

#### Industrial planetary gear units

- Torque range: PPK: 2.3 to 23.9 kNm
- P: 24 to 631 kNm
- P2.e: 24.8 to 124 kNm
- XP: Up to 5200 kNm
- Inline and right angle design
- High transmittable torque and compact design

## Decentralised products



### MOVIMOT® Gearmotor with integrated frequency inverter

- Power range: 0.37 to 4 kW (varies in star or delta connections)
- Speed range: 280 to 2900 rpm (varies in star or delta connections)
- Control via binary inputs/outputs possible and integrated brake control
- Supports PROFIBUS, INTERBUS, DeviceNet, CAN Open, AS-I communications
- IP54, Optional IP55, IP65 or IP66 degree of protection



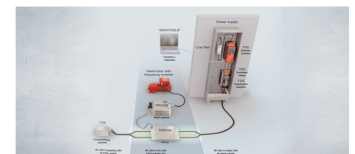
### MOVIGEAR® Mechatronic drive system

- Integrated mechatronic drive for horizontal conveying applications
- Compact design with motor, gear and electronics in one mechatronic drive system
- Energy saving potential up to 50% as compared with the conventional drives
- High degree of production up to IP69K and hygienic surface design



### MOVIFIT® Decentralised motion controller variants

- Decentralised installation technology with application-oriented drive and communication functions
- Modular design, available in three variants: MOVIFIT® FC, MOVIFIT® SC and MOVIFIT® MC
- MOVIFIT® again classified into two function levels: Classic and Technology
- Communication through PROFIBUS, PROFINET, PROFIsafe, DeviceNet, EtherNet/IP and Modbus/TCP



### MOVITRANS®

- MOVITRANS® the contactless energy transfer system from SEW-EURODRIVE works on the principle of inductive energy transfer
- Electrical energy is transferred without contact from a fixed conductor to one or more mobile consumers
- Variants available for mobile material handling applications on the floor (Trolley) and overhead (EMS) applications
- Power sizes 4 and 16 kW (Can be cascaded in combinations)

## Standard products



### MOVITRAC® B

- Designed for standard applications
- Open loop control V/F and VFC (Voltage Flux Control)
- Power rating: 0.25 to 75 kW (380-500 V)
- Standard or technology (IPOS) version for application specific requirements



### MOVITRAC® LTP

- Economical choice for standard tasks
- Open loop speed control vector and torque control vector
- Power range: 0.75 to 160 kW (460 V/3-Phase)
- Enclosure: IP20 and IP55 housing



### MOVIDRIVE® B

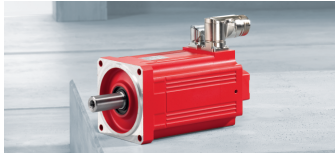
- Economic choice for sophisticated applications
- Open loop (VFC) and closed loop (CFC) vector control
- Power rating: 0.55 to 250 kW (380-500 V)
- Standard version with IPOS or technology version for application specific modules
- Wide options for Bus interfaces and Encoder connection possible



### MOVIAXIS®

- Multi-axis motion controller range from simple to graphically selectable functions
- 32 bit control system for high speed, high accuracy and dynamic multi-axis applications
- Consists of 3 modules: master module, axis module, power supply module
- Power supply module range: 10 to 75 kW
- Max. 10 axes can be controlled with one power module

## Servo products



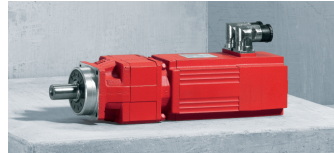
### CMP series smart servo motors

- Compact design high dynamic servo motors allow for operation in a confined space
- Both low inertia rotor (CMP) for high dynamic applications and powerful rotor (CMPZ) suitable for high inertia applications available in one series
- Motor torque available up to 95 Nm
- Speed class available: 2000/3000/4500/6000 rpm



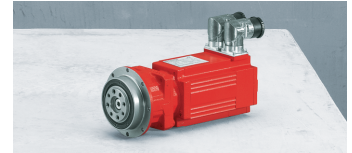
### PxG Planetary servo gear units

- Best solution: Wide-ranging modular system for optimum adaptation to your application, Geometrical compatibility with the market standard
- Solid shaft, Splined shaft and Flange block variants
- Acceleration torque up to 3600 Nm
- Available in 1-/2-/3-stage ratios & various sizes with ratios  $i = 3 - 1000$



### PSF, PSC and BSF series of servo planetary gearboxes

- High accuracy and high dynamic applications
- Low backlash servo gear units with optional reduced and minimized variants
- Finely graduated, integer gear ratios
- Lifelong lubrication and high permitted overhung loads
- High torsional rigidity and available in single/double stage design
- PSF: Planetary servo gears for torques between 25 to 3000 Nm. In-line solid shaft with B5 output flange or flange block
- PSC: Compact, cost-effective planetary servo gears for torques between 30 to 345 Nm. In-line solid shaft with B5/B14 flange
- BSF: Helical-bevel servo gears for torques between 40 to 1220 Nm. Right angled Solid/Hollow shaft with standard B5 mounting flange



### Drive Technology Centre (Assembly Plant)

**Vadodara, Gujarat**  
Phone +91 265 3045200  
salesvadodara@seweurodriveindia.com

**Chennai, Tamilnadu**  
Phone +91 44 37188888  
saleschennai@seweurodriveindia.com

**Pune, Maharashtra**  
Phone +91 2135 628700  
salespune@seweurodriveindia.com

**NCR (Tapukara)**  
Phone +91 144 6630 300  
salestapukara@seweurodriveindia.com

**Technical Offices**  
**Ahmedabad**  
Phone +91 79 40072067/68  
salesahmedabad@seweurodriveindia.com

**Aurangabad**  
Phone +91 86000 12333  
salesaurangabad@seweurodriveindia.com

**Bangalore**  
Phone +91 80 28370664/65 (Peenya)  
+91 80 28522662/63 (Electronic city)  
salesbangalore@seweurodriveindia.com

**Chennai**  
Phone +91 44 42849813 (City)  
+91 44 37188800 (Sriperumbudur)  
saleschennai@seweurodriveindia.com

**Cochin**  
Phone +91 98951 30375  
salescochin@seweurodriveindia.com

**Coimbatore**  
Phone +91 422 2322420  
salescoimbatore@seweurodriveindia.com

**Cuttack - Bhubaneswar**  
Phone +91 99374 46333  
salescuttack@seweurodriveindia.com

**Gandhinagar**  
Phone +91 787 8601656  
salesgandhinagar@seweurodriveindia.com

**Gurugram**  
Phone +91 124 4202295/6  
salesgurgaon@seweurodriveindia.com

**Hyderabad**  
Phone +91 74860 09299 (Secunderabad)  
Phone +91 73580 29974 (Hyderabad)  
saleshyderabad@seweurodriveindia.com

**Jaipur**  
Phone +91 77288 96489  
salesjaipur@seweurodriveindia.com

**Jamshedpur**  
Phone +91 99341 23671  
salesjamshedpur@seweurodriveindia.com

**Kolhapur**  
Phone +91 86000 20846  
saleskolhapur@seweurodriveindia.com

**Kolkata**  
Phone +91 33 22827457/58/59  
saleskolkata@seweurodriveindia.com

**Lucknow**  
Phone +91 97936 27333  
saleslucknow@seweurodriveindia.com

**Ludhiana**  
Phone +91 97250 04458  
salesludhiana@seweurodriveindia.com

**Mumbai**  
Phone +91 22 62399968  
salesmumbai@seweurodriveindia.com

**Nagpur**  
Phone +91 95610 89525  
salesnagpur@seweurodriveindia.com

**Nashik**  
Phone +91 96657 52978  
salesnashik@seweurodriveindia.com

**Navi Mumbai**  
Phone +91 22 27780081/82  
salesnavimumbai@seweurodriveindia.com

**New Delhi**  
Phone +91 63574 22406  
salesdelhi@seweurodriveindia.com

**Pune**  
Phone +91 20 27290180 (City)  
+91 2135 628725 (Chakan)  
salespune@seweurodriveindia.com

**Raipur**  
Phone +91 771 4090765  
salesraipur@seweurodriveindia.com

**Rajkot**  
Phone +91 85111 49383  
salesrajkot@seweurodriveindia.com

**Ropar**  
Phone +91 81462 67606  
saleschandigarh@seweurodriveindia.com

**NCR (Tapukara)**  
Phone +91 144 6630 300  
salestapukara@seweurodriveindia.com

**Trichy**  
Phone +91 97899 79855  
salestrichy@seweurodriveindia.com

**Vadodara**  
Phone +91 265 3045455 (Por)  
+91 265 4006561 (City)  
salesvadodara@seweurodriveindia.com

**Vellore**  
Phone +91 96000 02247  
salesvellore@seweurodriveindia.com

**Vijayawada**  
Phone +91 897 8861212  
salesvijayawada@seweurodriveindia.com

**Dhaka - Bangladesh**  
Phone +880 17290 97309  
salesdhaka@seweurodrivebangladesh.com



**SEW-EURODRIVE INDIA PVT. LTD.**  
Plot No. 4, GIDC, POR Ramangamdi,  
Vadodara - 391 243 Gujarat, INDIA  
Phone +91 265 3045200  
www.seweurodriveindia.com  
www.sew-eurodrive.de

