



RoltaMax

PROFILE



jessica@roltamax.com

www.roltamax.com



CONTENT

Since its foundation, the Company has built a focused portfolio of high quality assets with an attractive growth profile. We have built a lasting legacy that today forms the foundation on which we continue to serve and grow.

We believe united and decisive management, along with effective corporate stewardship, is one of the competitive strengths of our company which fosters a centralised business model and underpins our long-term performance.

Business Verticals :

- Material Handling Manufacturers
- Testing Machines manufacturing
- Sensor & Electronics manufacturing
- Dynamometers manufacturers
- Engineering Goods Supply



 **GIGASYS**
Precise | Reliable | Professional

 **HORSCH**

ASI

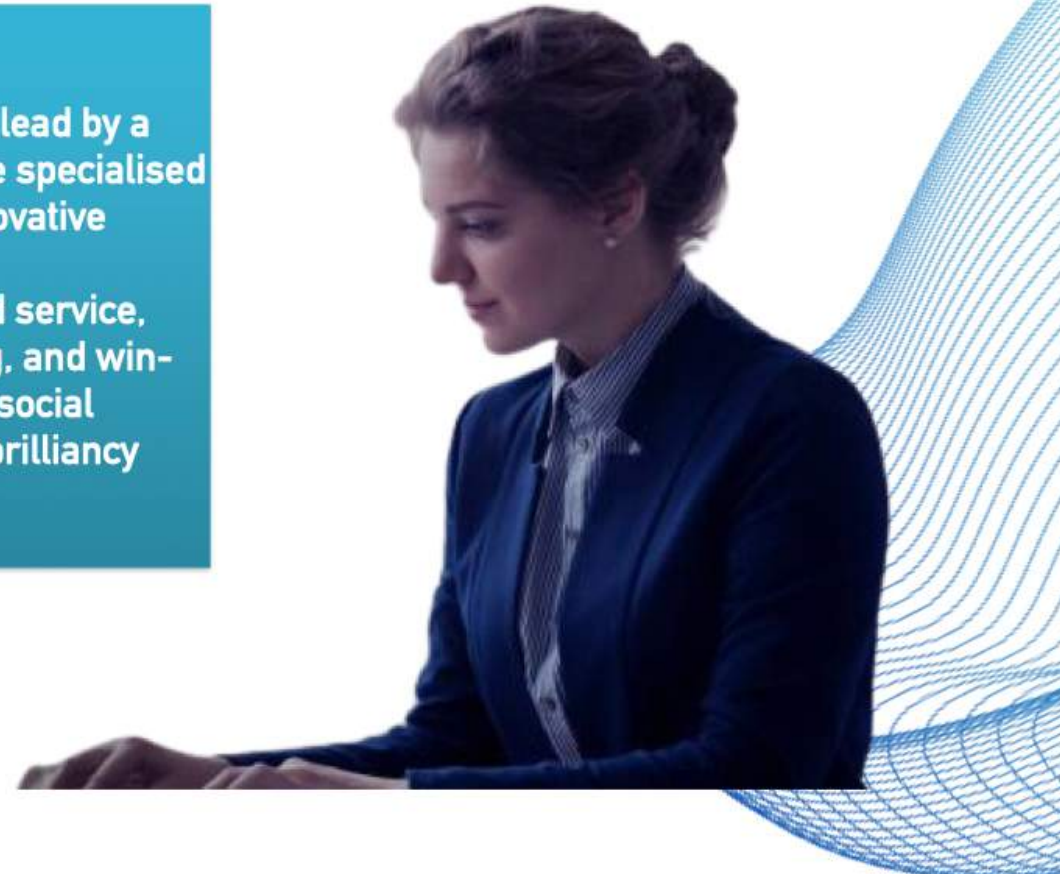

RoltaMax

Business Unified



We would like to extend our sincere thanks to All stakeholders. Our Company is the result of a unique combination of a Strong Management Team, Professionals, and a Dedicated workforce lead by a common vision to establish a company that can provide unique specialised services to various vital business sectors, with the tools of innovative strategies and in hand talent. We will continue to work hard and pursue first-rate quality and service, creating an enthusiastic, open, sincere, cooperated, pioneering, and win-win atmosphere. We earnestly welcome guests from different social sectors to RoltaMax in seeking development and creating the brilliancy together.

—Kavita Manral Singh-Director



VISION

"Our Grandfather taught us many business skills, business values & ethics, and most importantly, how to be committed and trustworthy both in business and in personal lives. It is the trust the customers, partners and employees have in us that brought success to the ROLTAMAX global brand"



MILESTONE

Roltamax was started by two Engineers Brothers
In 1986 and grown today as Well known
Company



2020

Aquire Gigafos Austria for Production of
Sensors and Electronics .

2021

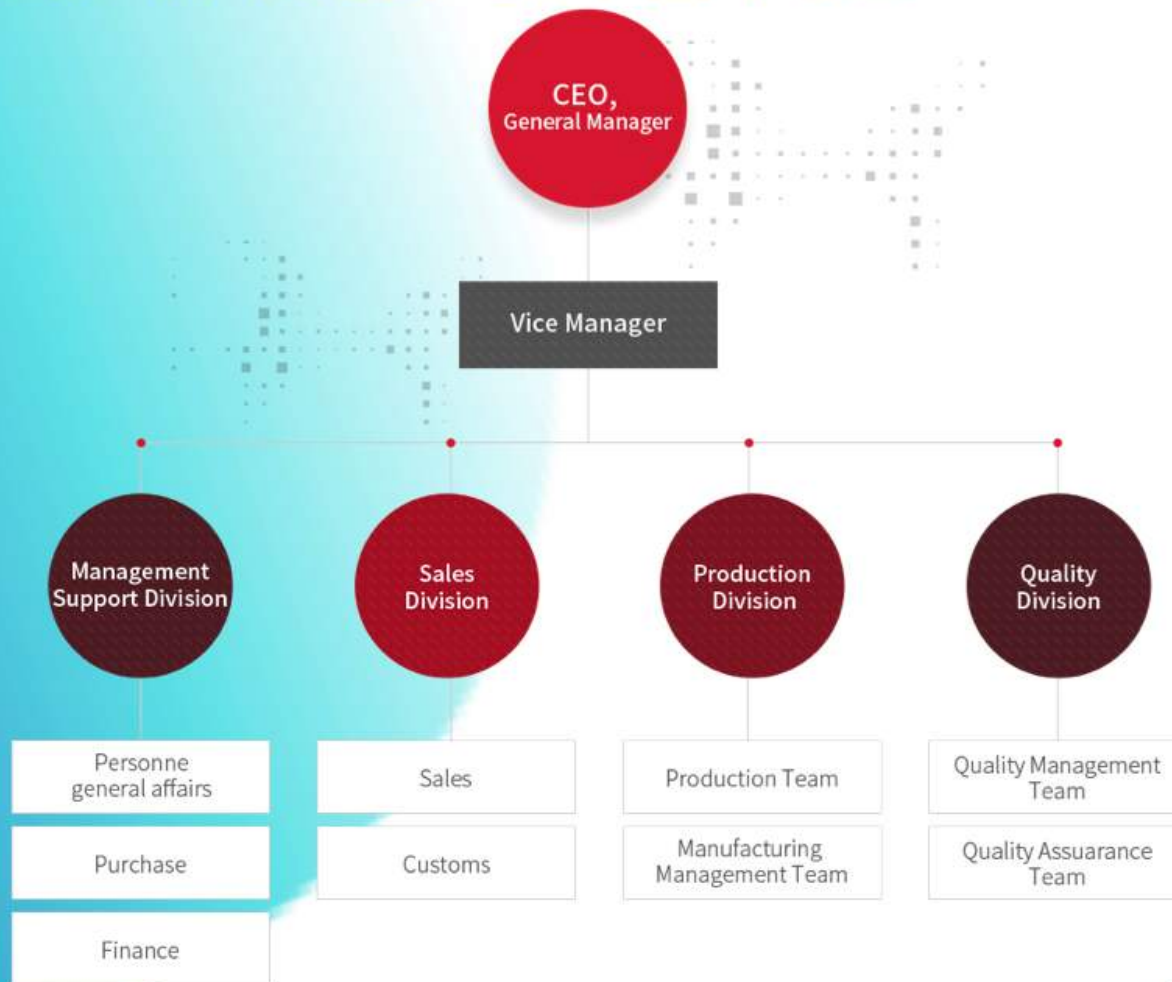
Aquire Horsch Material handling Division
Manufacturing material handling
machinery.

2022

Completed Committed partnership of
10Years with Global well known Brand and
Started Manufacturing Dynamometers &
Testing Machines Under Own-brand.



ORGANISATION



OUR TEAM

Our team of industry experts encourage continuous learning and skill development among team members. Provide opportunities for training, workshops, or conferences to enhance their expertise. Foster a culture of innovation and growth within the team.



Kavita Singh Manaral
DIRECTOR



JESSICA KRIEGER
CEO



RAJESH SINGH
GENERAL MANAGER



RoltaMax

Certifications



Certificate of Registration

This is to certify that

ROLTAMAX ENGINEERING PRIVATE LIMITED
S21 SILVER SPRING MIDC TALOJA NAVI MUMBAI -410210 INDIA

has been independently assessed by QRO
and is compliant with the requirement of:

ISO 9001:2015

Quality Management System

For the following scope of activities:

DESIGN & DEVELOPMENT, MANUFACTURE & SUPPLY OF LOAD CELL, PRESSURE SENSOR, TORQUE SENSOR, RADAR LEVEL SENSOR, FLOWMETERS & ELECTRONICS PRODUCTS, CONTROL AND AUTOMATION PANELS, TESTING MACHINES AND DYNAMOMETERS FOR TESTING WITH CONTROL CONSOLE AND SOFTWARE FOR INDUSTRIAL AND PRECISION ENGINEERING APPLICATIONS.

Date of Certification: 25th June 2024 2nd Surveillance Audit Due: 24th June 2026
1st Surveillance Audit Due: 24th June 2025 Certificate Expiry: 24th June 2027

Certificate Number: Draft



India Office : QRO Certification LLP
142, 8th Floor, Anar Building, Near Pashan Vihar Water Works Station, Taloja (410405), (MH) INDIA
Website : www.qrocertification.org, Email : info@qrocertification.org



Certificate of Compliance

This is to certify that the

Quality Management Systems – Requirements for
Aviation, Space, and Defense Organizations AS9100D
of

ROLTAMAX ENGINEERING PRIVATE LIMITED
at
S21 SILVER SPRING MIDC TALOJA NAVI MUMBAI -410210 INDIA

has been independently assessed and
is compliant with the requirements of:

AS9100D

For the following scope of activities:

DESIGN & DEVELOPMENT, MANUFACTURE & SUPPLY OF LOAD CELL, PRESSURE SENSOR, TORQUE SENSOR, RADAR LEVEL SENSOR, FLOWMETERS & ELECTRONICS PRODUCTS, CONTROL AND AUTOMATION PANELS, TESTING MACHINES AND DYNAMOMETERS FOR TESTING WITH CONTROL CONSOLE AND SOFTWARE FOR INDUSTRIAL AND PRECISION ENGINEERING APPLICATIONS.

Certificate Number: UQ - DRAFT

Validity of this certificate can be verified at www.ukcertifications.org.uk/verify

| | |
|--|----------------|
| Date of Certification | 25th June 2024 |
| 1 st Surveillance Audit Due | 24th June 2025 |
| 2 nd Surveillance Audit Due | 24th June 2026 |
| Certificate Expiry | 24th June 2027 |

Authorised Signatory



This certificate is the property of UK Certification & Inspection Limited and shall be returned immediately on request.
15, 16 Market Street, Covent Garden, London, WC2D 3DB, United Kingdom
Website: www.ukcertifications.org.uk, Email: info@ukcertifications.org.uk
Company No: 11877611



Certificate of Compliance

CE

We hereby declare that the technical files of all the items in each product group complies with the requirements of the Council Directive on The Electromagnetic Compatibility (EMC) Directive 2014/53/EU

Certificate No: DRAFT

Manufacturer : **ROLTAMAX ENGINEERING PRIVATE LIMITED**
Address : **S21 SILVER SPRING MIDC TALOJA NAVI MUMBAI -410210 INDIA**

Products : **LOAD CELL, PRESSURE SENSOR, TORQUE SENSOR, RADAR LEVEL SENSOR, FLOWMETERS & ELECTRONICS PRODUCTS, CONTROL AND AUTOMATION PANELS, TESTING MACHINES AND DYNAMOMETERS FOR TESTING WITH CONTROL CONSOLE AND SOFTWARE FOR INDUSTRIAL AND PRECISION ENGINEERING APPLICATIONS.**

Complies with the requirements applicable to it

The quality system file has been assessed, approved and is subject to continuous surveillance according to the Council Directive on The Electromagnetic Compatibility (EMC) Directive 2014/53/EU

This certificate is issued under the following conditions:

- It applies only to the quality system maintained in the manufacture of above referenced models and it does not substitute the design or type examination procedures, if required.
- The certificate remains valid until the manufacturing conditions or the quality system are changed.
- The certificate validity is conditioned by positive results on surveillance audits.

The CE mark as shown above can be used, under the responsibility of the manufacturer, after completion of an EC Declaration of conformity and compliance with all relevant EC Directives. The statement is based on a single evaluation of test report of one sample of above mentioned product. It does not imply an assessment of the whole production.

Validity of this certificate can be verified at www.ukcertifications.org.uk/verify

| | |
|--|----------------|
| Date of Certification | 25th June 2024 |
| 1 st Surveillance Audit Due | 24th June 2025 |
| 2 nd Surveillance Audit Due | 24th June 2026 |
| Certificate Expiry | 24th June 2027 |

Authorised Signatory



This certificate is the property of UK Certification & Inspection Limited and shall be returned immediately on request.
15, 16 Market Street, Covent Garden, London, WC2D 3DB, United Kingdom
Website: www.ukcertifications.org.uk, Email: info@ukcertifications.org.uk
Company No: 11877611



Euro-Inspired Manufacturing.



MODERN CNC WORKSHOP FOR PRECISION PRODUCTION



Manufacturing

SENSOR & ELECTRONICS



Flowmeters



Torque sensors



Force Sensors



PRESSURE SENSOR SOLUTION

- Air conditioning and refrigeration
- Hydraulic machinery
- Constant pressure water supply
- Auto industry
- Environmental monitoring

EV DYNAMOMETER



1 MOTOR TESTING

EV TWO WHEELERS , THREE WHEELER ,
FOUR WHEELERS -250KW

2 HUB MOTOR TESTING

EV TWO WHEELERS , THREE WHEELER ,
FOUR WHEELERS -250KW

3 CHASSIS DYNAMOMETER

EV TWO WHEELERS , THREE WHEELER ,
FOUR WHEELERS -250KW

SAE
INTERNATIONAL®
STANDARDS & GUIDELINES

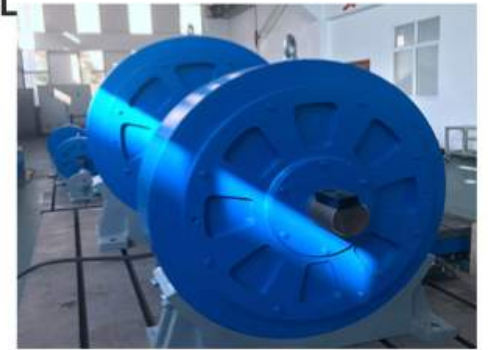
DYNAMOMETER

1

TRANSMISSION



INDUSTRIAL



2

AUTOMOTIVE



3

MARINE



CHASSIS DYNAMOMETER 2

THREE WHEELER

1 TWO WHEELER



3 FOUR WHEELERS

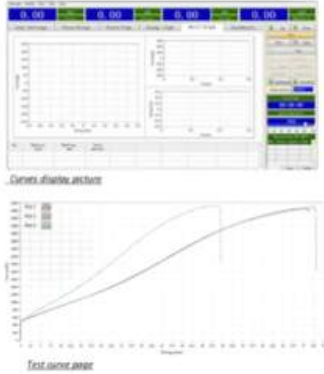


TESTING MACHINE



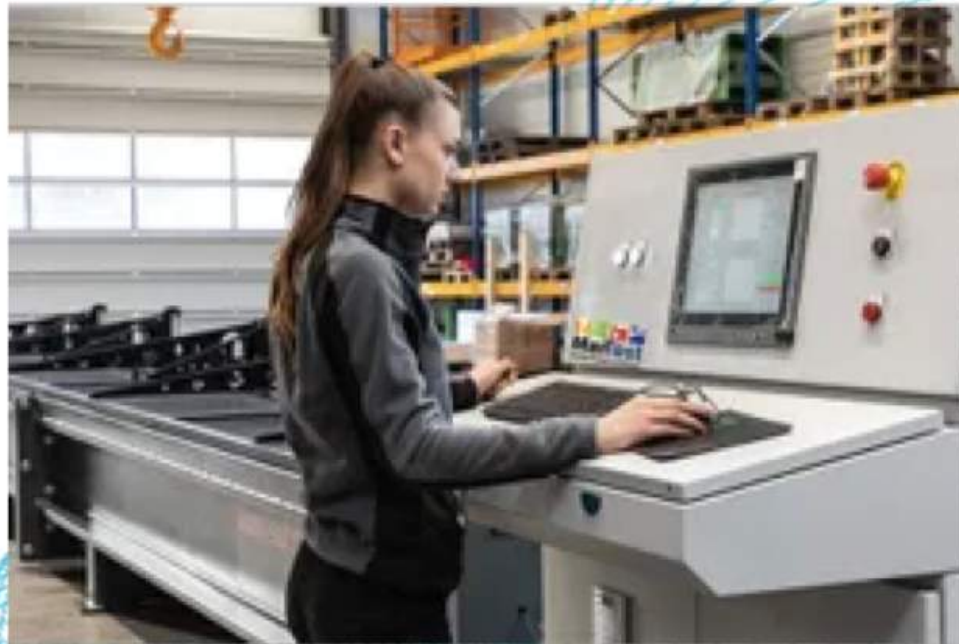
Computer Controlled

BRIDGE BEARING TESTING MACHINE



TESTING MACHINES

1 COMPRESSION TEST



2 TENSILE TEST

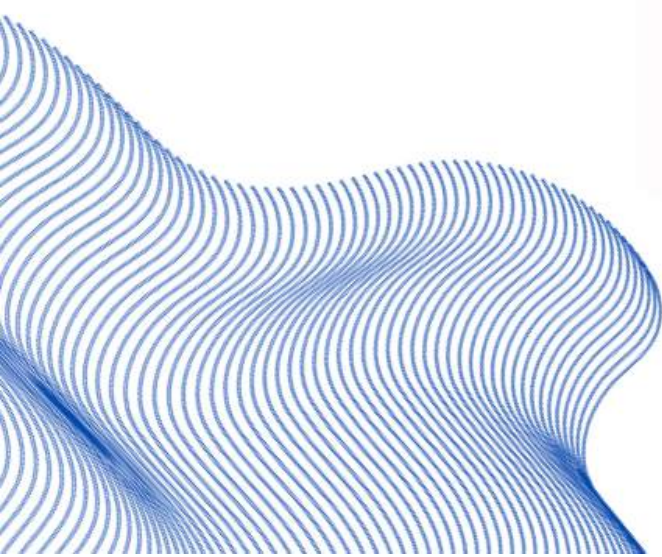


3 UNIVERSAL TEST



HYDRAULIC WINCHES

MANUFACTURING





**INDUSTRIES
WE SERVE**



**INDUSTRIAL
APPLICATIONS
WE CATER TO**



CUSTOMERS



HITACHI



OLA





RoltaMax



521-SILVERSPRING PLOT-G6 MIDC
TALOJA NAVI MUMBAI-410210 INDIA

+91 8080809588

jessica@roltamax.com

www.roltamax.com