

make it smart.

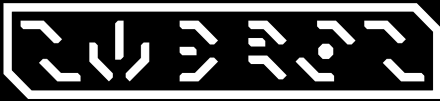


NUFMB_TD_V16

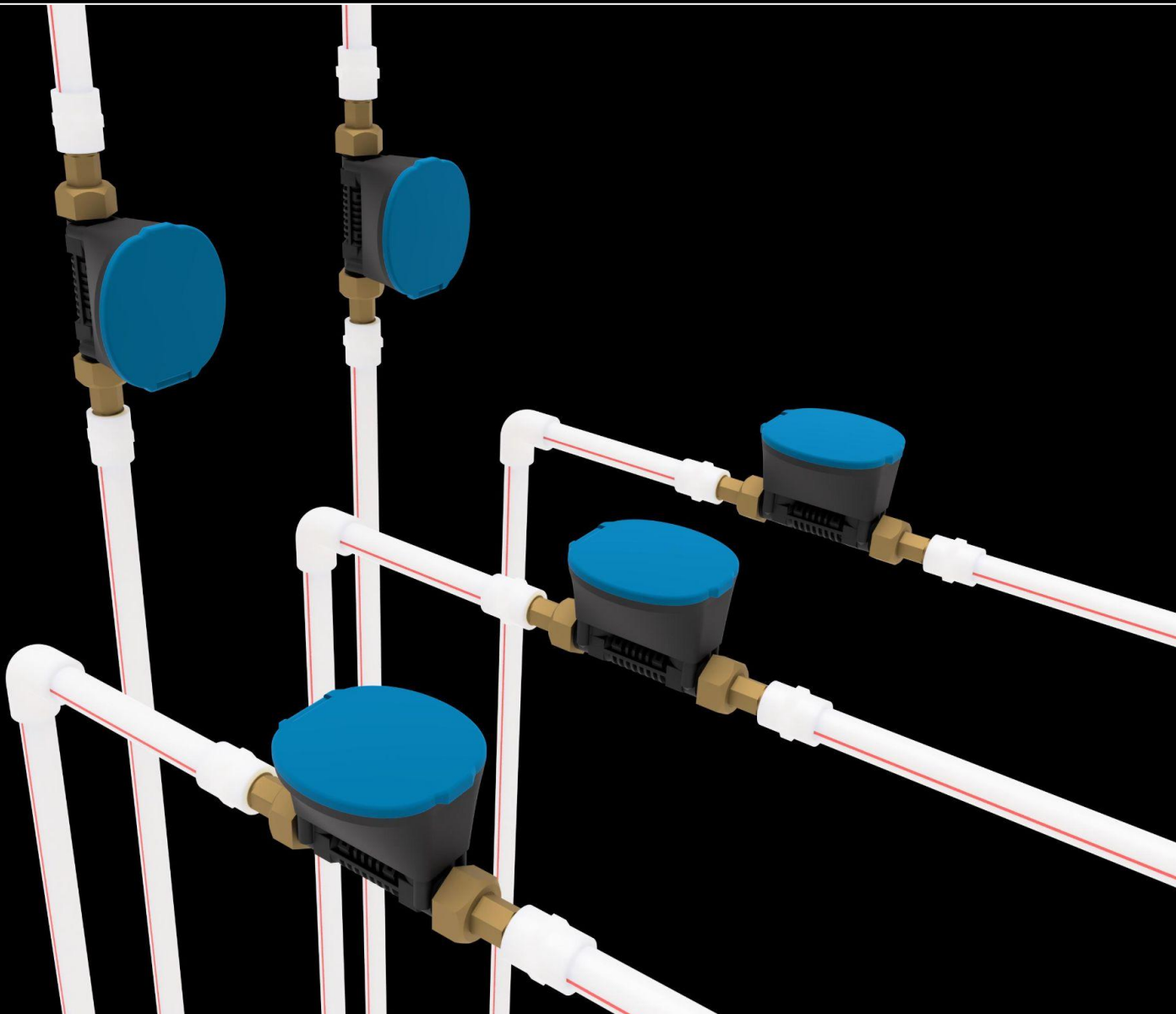


NUDRON SMART ULTRASONIC FLOW METER

TECHNICAL DESCRIPTION



make it smart.



NUDRON SMART ULTRASONIC FLOW METER (NUFM-B-xxW)

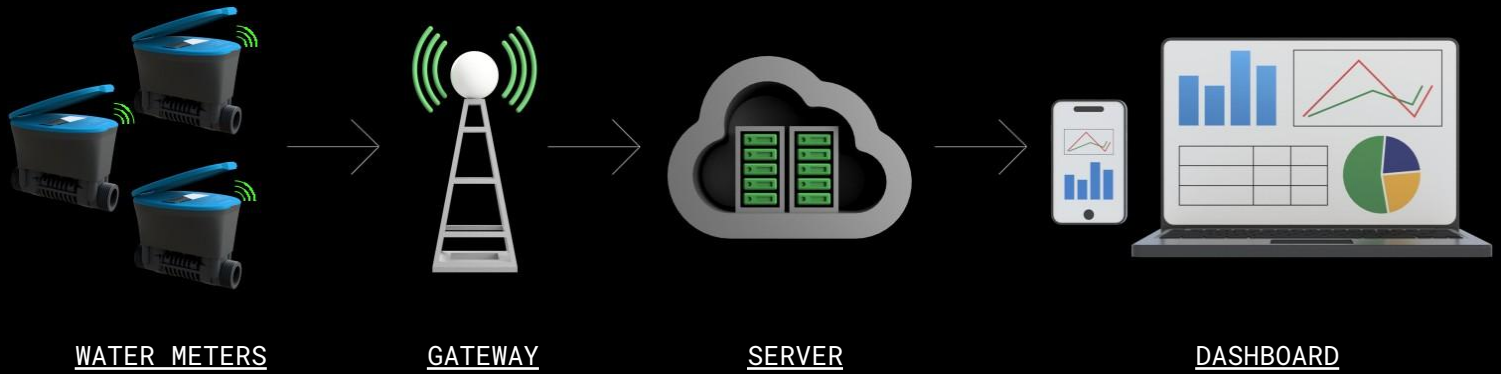
Manage water distribution efficiently in your building and city

- + Implement a **fair usage** policy in your building or commercial area
- + **Save on water bills**, pay only for what you use
- + Identify pesky **leakages** in your piping system
- + Detect **pipe bursts** early and avoid expensive repairs
- + Reduce **non-revenue water** in your city, streamline billing and collection
- + and MORE...

Install Nudron's robust, reliable, and cost-effective smart flow meters and forget about your water woes



make it smart.



SMART WATER METER SOLUTION

- + **Simple installation** process
- + Prompt **technical support**
- + **Remotely monitor** your water distribution and supply
- + **Ease of mind** and **convenience** like never before
- + Solution that lasts more than a **decade** with an average **ROI period of 2 years**

CHARACTERISTICS

PERFORMANCE

- + MEASURES **HOT AND COLD** WATER
- + **SENSITIVE** TO FLOW RATES STARTING FROM JUST **1 L/H**
- + RESISTANT TO IMPURITIES IN WATER
- + NO MEASUREMENT OF AIR
- + LOW PRESSURE LOSS ACROSS THE METER

BUILT

- + **MAINTENANCE-FREE** DEVICE WITH NO MOVING PARTS
- + **FOOD GRADE** POLYMER BODY KEEPS FLUIDS CLEAN
- + **TAMPER-PROOF** MECHANICAL DESIGN, **IP68** RATED
- + IMMUNE TO EXTERNAL MAGNETIC FIELDS
- + AMBIENT TEMPERATURE RANGE FROM 0°C-65°C

ELECTRONICS

- + **HIGH RESOLUTION**, ALWAYS ON, LCD WITH 10-DIGIT TOTALIZER
- + **INDUSTRIAL** GRADE COMPONENTS
- + LOCAL **STORAGE** CAPACITY OF UPTO **10 YEARS** OF DAILY RECORDS
- + LONG LASTING **BATTERY** PROVIDES LIFE UP TO **20 YEARS**

WIRELESS

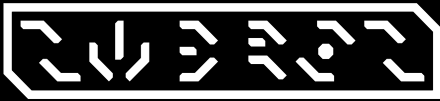
- + **END-TO-END ENCRYPTION** FOR ALL WIRELESS COMMUNICATION
- + SUPPORTS CONFIGURATION AND **FIRMWARE UPDATES**
- + ALERT **NOTIFICATIONS** FOR TAMPER ATTEMPTS, LEAKS, PIPE BURSTS, REVERSE FLOW
- + DAILY WIRELESS DATA LOGGING

INSTALLATION

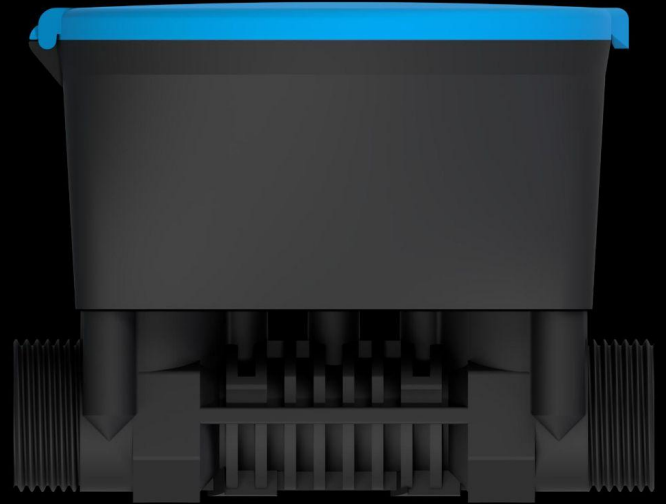
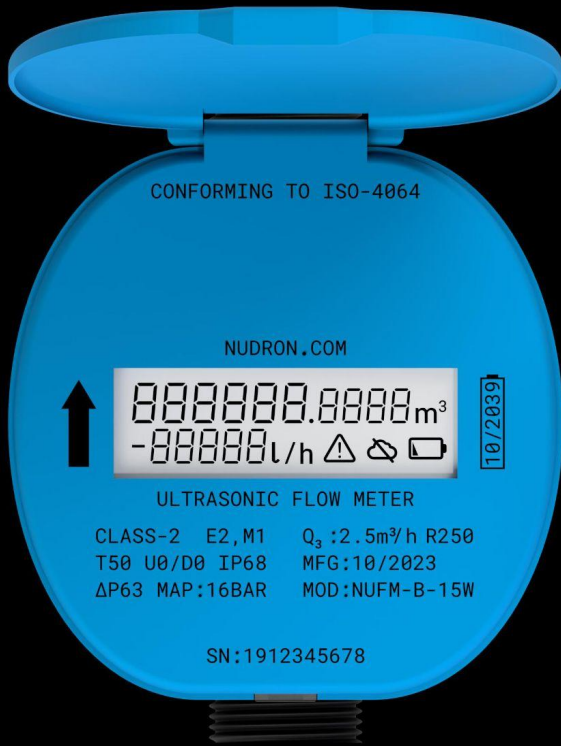
- + CAN BE INSTALLED IN **ANY POSITION** AND ORIENTATION
- + STRAIGHT SECTION NOT REQUIRED FOR INSTALLATION

USER

- + EASY CONNECT TO **LORAWAN** NETWORK SERVER (V1.1.X), ALL REGIONS SUPPORTED
- + **USER-FRIENDLY DOCUMENTATION** FOR PACKET DECODING



make it smart.



TECHNICAL DATA

MODEL CODE	NUFM-B-15W	NUFM-B-20W	NUFM-B-25W
SUITABLE PIPE DIAMETER (DN)	15 MM	20 MM	25 MM
METER DIMENSION (MM)	110 x 95 x 87	130 x 95 x 92	150 x 95 x 95
WEIGHT (MAX. IN GRAMS)	330	350	425
THREADING (GB STANDARD)	GB 3/4"	GB 1"	GB 1 1/4"
STARTING FLOW RATE	1 L/H	1 L/H	1 L/H
PERMANENT FLOW RATE (Q3)	2500 L/H	4000 L/H	6300 L/H
OVERLOAD FLOW RATE (Q4)	3125 L/H	5000 L/H	7875 L/H
DYNAMIC RANGE (Q3/Q1)	R 80/100/160/250/315/400/500		
ACCURACY CLASS	CLASS 2		
TEMPERATURE CLASS	T30/T50/T90		
PRESSURE LOSS AT Q3	< 0.63 BAR		
MAXIMUM ADMISSIBLE PRESSURE	16 BAR		

COMPLIANCE: ISO-4064, WPC-ETA, IP68, ROHS

DESIGNED IN INDIA.
MADE IN INDIA.
BUILT FOR THE WORLD.