

MIR
TECHNOLOGY

The Complete Technology People

QIHe

QIHE INDIA PVT. LTD.



Website : www.mrtechnology.in

New Version Two Head SMT Pick & Place Machine



TVM802A-X



TVM802B-X

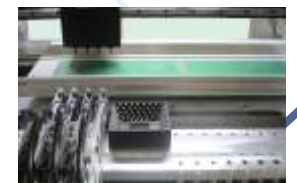
Name	TVM802A-X	TVM802B-X
Max applicable PCB	20X2MM - 340X340MM	20x20mm-260x330mm
Max XY moving area	395X450mm	395x450mm
Max Z Moving range	12.5mm	
Placement head quantity	2	2
Mounting Speed without vision	6500CPH	6000CPH
Mounting speed with vision	5500CPH	
Mounting accuracy	0.025mm	0.025mm
Applicable Components	0402-5050, SOP, TQFP, QFN etc.	
Components supply	Tape reel, Bulk, Tubular, Tray etc.	Tape reel, bulk, Tray
Vision systems	2 HDCCD Camera up-looking, Automatic identify angle deviations and position deviations. Down-looking camera, Automatic identify mark point of pcb	
Feeder count & Tape width	Total=29, 8mm=25, 12mm=3, 16mm=1	Total=46, 8mm=38, 12mm=6, 16mm=2
Pump	1 silent brushless vacuum pump, Blowing Pump	1 vacuum pump(-91KP), 1 blow pump
Leakage material detection	Vacuum	Vacuum
Power	125W (average power)	125W
Power supply	AC220Vor AC110V	AC220VorAC110V
Machine size	L940xW640xH330mm	
Package Size	L1070xL770xH420mm	
Volume	0.38CBM	0.33
Net Weight	39kg	41.4kg
Gross weight	60kg	54.04kg
Support PCB design software	Prot199/Altium Designer/Eagle/Pads/Allegre etc.	Prot199/AltiumDesigner/Eagle/Pads/Allegre Etc



Advance 4 Head – 4 Feet SMT LED Pick & Place Machine QL41A/QL41B



Model	QL41A / QL41B
Applicable PCB	1200mm x 240mm
XY moving range	530mm x 430mm
Z moving range	16mm
Placement head quantity	4
Mounting capability	13000cph Without vision 10000cph With Vision
Mounting accuracy	0.025mm
Applicable components	0805, sop8....QFN
Components supply	Tape reel, bulk package (IC) tubes
Motor control scheme	stepping motor, Closed-loop Control System
Tape width	8mm, 12mm, 16mm, 24mm
Feeders loading ability	QL41A 8 Feeders / QL41B 16 Feeders
Machine dimension	L1340xW660XH1600mm
Visual camera	LPCB inspection camera
Visual Camera (down)	Automatic identify the mark point
Visual Camera (up)	Automatic adjust the offset
Vacuum pump quality	External air pump
Power supply	AC220V / AC110V
Average working Power	350W
Net weight	184KG
Packing size	1.05 CBM



New Version Four Head SMT Pick & Place Machine



TVM925



TVM926

Model	TVM925	TVM926
Applicable PCB	20x20mm-310x360mm	20x20mm-330x580mm
XY moving range	375mmx620mm	585mmx620mm
Z moving range	16mm	16mm
Placement head quantity	4	4
Mounting capability	9000cph Without vision 7000cph with vision	Vision Off: 9000cph Vision On: 7000cph
Mounting accuracy	0.025mm	0.025mm
Applicable components	0402, 0603, 0805, sop8, QFN	0402, 0603, 0805, sop8, etc
Components supply	Tape reel, bulle package (IC) tubes	Tape reel, bulk package (IC) tubes
Motor control scheme	Closed loop stepping servo system	Closed-loop Control system
Tape width	8mm, 12mm, 16mm, 24mm	8mm, 12mm, 16mm, 24mm
Feeders loading ability	38(YAMAHA Feeder is available)	63(YAMAHA Feeder is available)
Machine dimension	L845xW865xH650mm	L1226xW955xH742mm
Visual camera	1 PCB inspection camera, 1 Flying camera	1 PCB inspection camera, 1 Flying camera
Visual Camera (down)	Automatic identity the mark point	Automatic identity the mark point
Visual Camera (up)	Automatic adjust the offset	Automatic adjust the offset
Vacuum pump quality	External air pump	External air pump
Power supply	AC220V/AC110V	AC220V/AC110V
Average working Power	350W	350W
Net weight	130KG	205KG
Packing size	0.82CBM	0.98CBM



Q4 SMT Pick & Place Machine 4 Heads 50 Slots Servo Motor with PCB Rail Servo



Model	Q4
Max Applicable PCB	50*50mm-330X330mm
Max XY Moving Range	360*670 mm
MAX Z Moving Range	+/-15 mm
Placement Head Quantity	4
Mounting Capability	Maximum Speed : 13000cph Average Speed: 8000cph
Mounting Accuracy	0.025 mm
Applicable Components	0201, 0603, 0805, sop8, QFN, BGA etc.
PCB Transfer direction	Left -> Right
Component Supply	Tape Reel, Bulk Package (IC) tubes
Control System	Servo Motor + TBI Screw ROD
Tape Width	8mm.12mm.16mm.24mm.
Feeders Loading Ability	50 (YAMAHA Feeders is Available)
Visual Camera	1 PCB Inspection Camera, 1 Flying Camera
Visual Camera (Down)	Automatic Identify the mark point
Visual Camera (UP)	Automatic Adjust The Offset
Vacuum Pump Quality	External Air Pump
Power Supply	AC220V/AC110V
Gross Weight	667 Kg
Machine Dimension	L850xW1320xH1450mm



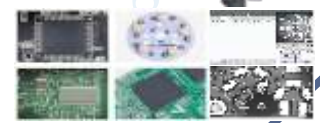
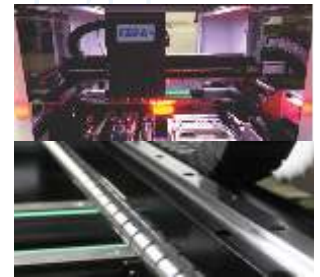
Q6 Inline SMT Pick & Place Machine 6 Heads Servo Motor and Ball Screw Driven



Model	Q6
Max Applicable PCB size	20x50mm 350x360mm (customized 1200mm L possible)
Max XY moving range	500x700mm
Max Z moving range	32mm
Working Power	Approx 1.2kw
Placement Head Quantity	6
Max Mounting Capability	Maximum Speed: 16000cph(0.22s/chips) Average Speed: 9500cph (0.38s/chips)
Mounting Accuracy	±40 μ m/chip025mm
Max Height Placement	15mm
Component Angle	0 – 360° Arbitrary angle, synchronized rotation in motion.
Applicable Component	Resistor : 0201 – 5730, Diode, Triode Chip: LQFP, QFN, QFP, BGA spacing≥0.3mm LED: 0402 – 5070, Anti-lumen, Lens
Track Adjustment	Manually
Feeder Slot	50(25 front and 25 back) based on 8mm components with stip package
Feeder Type	Yamaha Electrical + Pneumatic 8mm, 12mm, 16mm, 24mm, 32mm; 3/5 tubes and vibration feeder
Max IC Size	33mm x 33mm
Visual Camera (Up)	1 HCCD Camera
Visual Camera (Down)	1 HCD Camera
PCB Transfer Direction	Left → Right
Component Package Type	Strip Width: 4/8/12/16/24/32/44/56mm Material Specification : Max 64(4/8mm strip, roll) Tube Material Specification: Max 24(3tube vibration feeder) Tray: Max 96 (IC Tray)
Driver Motor	X,Y Axis: Servo Motor Panasonic Z Axis: Step Motor Track: Step Motor
XY Transfer Mode	TIB High Precision Screw Ball
XY Axis Drive Guide Rail	High Precision Linear track, HIWIN Brand
XY Operating Mode	Intelligent curve acceleration and deceleration linear linkage with linear interpolation algorithm
Z Axis Drive Guide Rail	High Precision linear track, Adecker brand
Power Supply	AC110V//AC220V 50/60Hz; 3 phases 380V
Air Supply	Min 0.5MPa, 200L/min (A.N.R.)



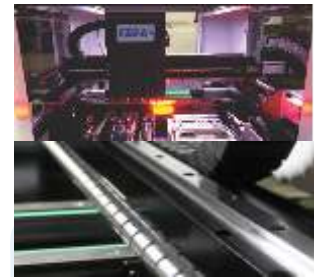
Q8 Inline SMT Pick & Place Machine 8 Heads Panasonic Servo Motor and Ball Screw Driven



Model	Q8
Max Applicable PCB size	20mm x 50mm~350mm x 500mm (customized 1.5 Meters)
Max XY moving range	800mm x 710mm
Max Z moving range	32mm
Working Power	Approx 1.2kw
Placement Head Quantity	8
Max Mounting Capability	Maximum Speed: 18000cph(0.22s/chips) Average Speed: 12000cph (0.30s/chips) ~ 16000cph (0.23s/chips)
Mounting Accuracy	±40 μ m/chip
Max Height Placement	15mm
Component Angle	0 ~ 360° at any Angle, rotate synchronously during rotation.
Applicable Component	Resistor and Capacitance: 0201 ~ 5730, Diode, Transistor Chip: LQFP, QFN, QFP, BGA spacing≥0.3mm LED: 0402 ~ 5070, Anti-lumen, Lens
Track Adjustment	Motor Drive
Feeder Slot	80(40 front and 40 back)
Feeder Type	Yamaha Electrical + Pneumatic 8mm, 12mm, 16mm, 24mm, 32mm; 3/5 tubes and vibration feeder
Max IC Size	33mm x 33mm
Visual Camera (Up)	1 HCCD Camera 1 High-Definition Frequency Precision High-Speed Recognition Aerial Camera (Mobile aerial Photography)
Visual Camera (Down)	1 HCD Camera 2 Mark High-Precision Cameras (positioning photography)
PCB Transfer Direction	3 section Transmission Connection from Left → Right, Automatic PCB Transmission and Positioning Strip Width: 4/8/12/16/24/32/44/56mm Material Specification : Max 80(4/8mm strip, roll) Tube Material Specification of front and Rear Feeders: Max 30 (3 tube vibration feeder)
Component Package Type	Tray: Max 96 (IC Tray)
Driver Motor	X,Y Axis: Servo Motor Panasonic Z Axis: Stepper Motor Track: Stepper Motor
XY Transfer Mode	TIB High Precision Ball Screw
XY Axis Drive Guide Rail	High Precision Linear track, Shangyin HIWIN Brand
XY Operating Mode	Intelligent curve acceleration and deceleration linear linkage with built-in linear interpolation algorithm
Z Axis Drive Guide Rail	Yadeke High Precision linear track
Power Supply	AC220V
Air Supply	Min 0.5MPa, 200L/min (A.N.R.)
Net Weight	1025kg
Machine Dimension	W1385 x D1309 x H1450mm



Q10 Inline SMT Pick & Place Machine 10 Heads Panasonic Servo Motor and Ball Screw Driven



Model	Q10
Max Applicable PCB size	20mm x 50mm-350mm x 500mm (customized 1.5 Meters)
Max XY moving range	800mm x 710mm
Max Z moving range	32mm
Working Power	-1.2kw
Placement Head Quantity	10
Max Mounting Capability	Maximum Speed: 27000cph(0.13s/chips) Average Speed: 16000cph (0.22s/chips) – 21000cph (0.17s/chips)
Mounting Accuracy	±40 μ m/chip
Max Height Placement	15mm
Component Angle	0 – 360° at any Angle, rotate synchronously during rotation.
Applicable Component	Resistor and Capacitance: 0201 – 5730, Diode, Transistor Chip: LQFP, QFN, QFP, BGA spacing=0.3mm LED: 0402 – 5070, Anti-lumen, Lens
Track Adjustment	Motor Drive
Feeder Slot	100 (50 front and 50 back)
Feeder Type	Yamaha Electrical + Pneumatic 8mm, 12mm, 16mm, 24mm, 32mm; 3/5 tubes and vibration feeder
Max IC Size	33mm x 33mm
Visual Camera (Up)	1 High-Definition Frequency Precision High-Speed Recognition Aerial Camera
Visual Camera (Down)	2 Mark High-Precision Cameras
PCB Transfer Direction	3 section Transmission Connection from Left → Right, Automatic PCB Transmission and Positioning Strip Width: 4/8/12/16/24/32/44/56mm Material Specification : Max 100(4/8mm strip, roll)
Component Package Type	Tube Material Specification of front and Rear Feeders: Max 30 (3 tube vibration feeder) Tray: Max 96 (IC Tray)
Driver Motor	X,Y Axis: Servo Motor Panasonic Z Axis: Stepper Motor Track: Stepper Motor
XY Transfer Mode	TIB High Precision Ball Screw
XY Axis Drive Guide Rail	High Precision Linear track, Shangyin HIWIN Brand
XY Operating Mode	Intelligent curve acceleration and deceleration linear linkage with built-in linear interpolation algorithm
Z Axis Drive Guide Rail	Yadeke High Precision linear track
Power Supply	AC220V
Air Supply	External Air Source (Min 0.5MPa, 200L/min (A.N.R.))
Net Weight	1025kg
Machine Dimension	W1555 x D1309 x H1453mm
Driving System	Panasonic High Speed DSP Drive
Control System	Q8 Release, a self-developed fully automatic SMT Machine operating system by Qihe
Operating System	Supports Windows XP and Win7 operating systems
Leakage Detection	Visual inspection
Support PCB Design Software	Coordinate files exported from Protel, DXP, Altium Designer, Pads, Candes, and Proteus in CSV, txt format.



Conveyor Reflow Oven QRF320



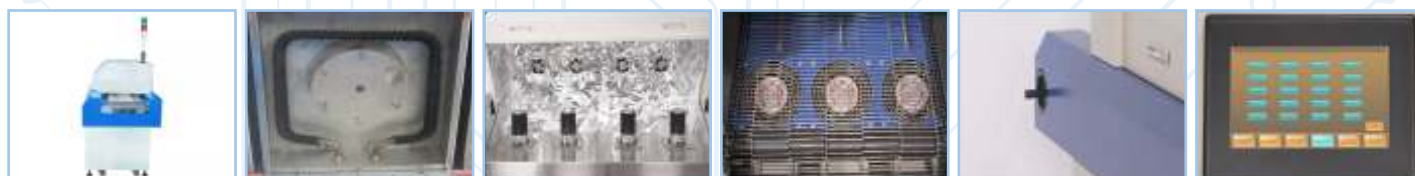
Model	QRF320
Number of Heating Zones	Upper 3 Hot Air Heating Zones + Lower 2 Heating Zones
Length of Heating Zones	960mm
The Heating Type	Intelligent Level Sirocco & Rapid Infrared Heating
The Cooling Zone Quantity	1
Maximum Width of PCB Board	300mm
The Operation Direction	Left-Right
Delivery Options	Net Transmission
The Speed of Conveyor Belt	0-1600mm/min
The Power Supply	Three Phase 5 Line 380V 50/60Hz
Peak Power	4.5KW
Heating Up Time	Around 15 Minutes
Temperature Control Range	Room Temperature~300°C
Temperature Control Mode	PID Closed-Loop Control
Temperature Control Accuracy	±1°C
PCB Temperature Distribution Deviation	±2°C
Overall Dimensions	1450X630X470
Machine Weight	160KG



Six Zones Conveyor Reflow Oven QRF630 / Eight Zones Conveyor Reflow Oven QRF830



Model	QRF630	QRF830
Heat Zone Numbers	6 Zones (Up3, Down3)	8 Zones (Up4, Down4)
Heat Method	Hot Wind	Hot Wind
Cooling Zone Numbers	Two Natural Air Cooling	Two Natural Air Cooling
Length Of Heating Zone	1060mm	1400mm
Width Of Net Belt	300mm	300mm
PCB Size	280mm	280mm
Height Of Net Belt	900±20mm	900±20mm
Transport Speed Of Net Belt	160~1350mm/min(Analog quantity adjusting)	160~1350mm/min(Analog quantity adjusting)
Transport Direction Of Net Belt	Left to Right (right to left)	Left to Right (right to left)
Starting Power	9KW	11KW
Working Power	3KW	3.5KW
Input Supply Power	Three-phase Five-wire 380±10% 50HZ	Three-Phase Five-Wire 380±10% 50HZ
Heat Up Time	About 20 mins	About 20 mins
Time of Passing Through The Machine	3.5 to 5.5 mins	3.5 to 5.5 mins
Range of Temperature Control	Indoor Temperature to 400 Degrees	Indoor Temperature to 400 Degrees
Method of Temperature Control	PID Close Cycle Control	PID Close Cycle Control
Net Weight	215kg	250kg
Outline Size	2100x680x1200mm	2440x680x1200mm



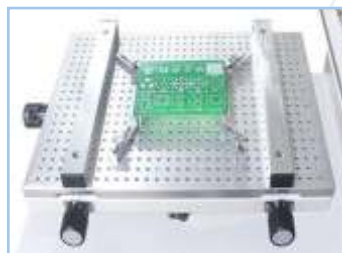
Semi-Automatic Stencil Printing Machine QP3250



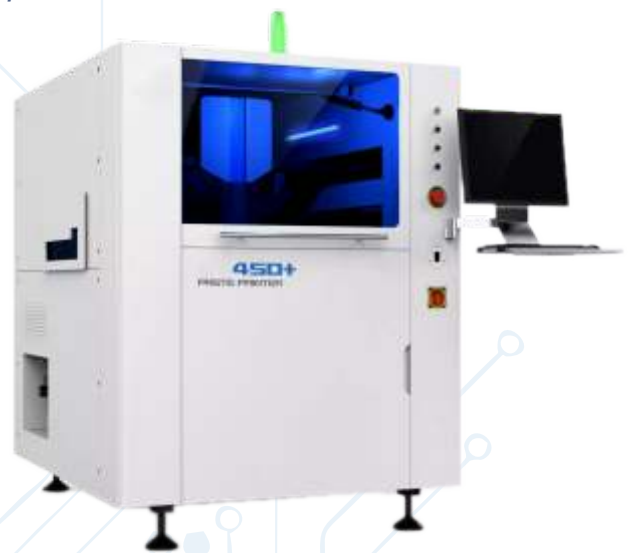
1.25 Meter Semi-Automatic Stencil Printing Machine QP32125



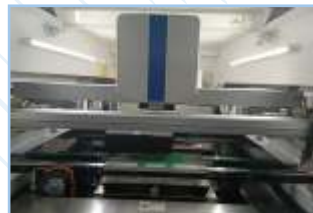
Model	QP3250	QP32125
Printing Table Acreage	320*500mm	320*1250mm
Frame Size	370*470mm, 420*520mm, 550*650mm	370*470mm, 420*520mm, 550*650mm, 550*1550mm
Substrate Size	320*230mm	300*1230mm
Substrate Thickness	0.2-2.2mm	0.2-5.0mm
Fixation Of Printing Position	Pcb Outer or Pin Positioning	Pcb Outer or Pin Positioning
Micro Adjust Of Table Board	Front/Back±10mm, F/L±10mm	Front/Back±10mm, F/L±10mm
Printing Precise	±0.02mm	±0.02mm
vMachine Repeated Accuracy	±0.05mm	±0.05mm
Minimum Spacing	0.25mm	0.35mm
Using Power Supply	220v 50/60Hz 100w	220v 50/60Hz 100w
Machine Size	900*700*1650mm	1680*700*1650mm
Outline Packaging Size	1100*850*2120mm	2200*850*2120mm
Net Weight	200kg	280kg
Gross Weight	250kg	350kg
Printing Table Acreage	320*500mm	320*1250mm



Fully Automatic Inline Solder Paste / Glue Stencil Printer Machine QFA5060/QP450+



Model	QFA5060	QP450+
MAX Board Size (X&Y)	600mm x 400mm	450mm x 350mm
MIN Board Size (X&Y)	50mm x 50mm	50mm x 50mm
PCB Thickness	0.4mm~6mm	0.4mm~6mm
MAX Board Weight	3kg	6kg
Transfer Direction	Left-Left, Right-Right, Left-Left, Right-Right,	Left-Left, Right-Right, Left-Left, Right-Right,
Support Method	Magnetic Ejector Pin, Manual Crimping.	Magnetic Thimble, Equal High Block, Suction Cavity, Special Workpiece Fixture
Template Frame Size	370mm x 370mm ~ 600mm x 800mm	470mm x 370mm ~ 737mm x 737mm
Max Printing Are (X&Y)	600mm x 400mm	450mm x 350mm
Printing Pressure	0.5~10kg	0.5~10kg
Camera System	High-Performance CCD and Image Processing System	Independent Camera, Upwards/Downwards Imaging Vision System
Air Supply	4-5 kg/Cm ²	4-6 kg/Cm ²
Power Supply	220VAC	220VAC
Operating System	Windows XP	Windows XP
Machine Dimension	1580mm(L)x 700mm(W) x 1650 (H)	1140mm(L)x 1450mm(W) x 1480 (H)
Machine Weight	435kg	1000kg



Dual Wave Lead Free Soldering Machine 200DS



Model	200DS
PCB Board Width	250mm
Transmission Speed	0-1.8m/min
Transfer Method	Claw Chain Drive (L->R)
Furnace Temperature	Room Temperature -300 °C
Furnace Capacity	120-200KG
Flux Capacity	5.2L
Wave Height	0-10mm
Preheat Range	Room Temperature to 250°C
Preheat Zone Length	600mm
Start Total Power (KW)	12KW
Work Total Power (KW)	4KW
Power Supply	AC380V 50Hz
Dimension (mm)	L2500*W1200*H1600mm

Four Axis One Rotated Head One Platform Automatic Soldering Machine QH-ASM331R



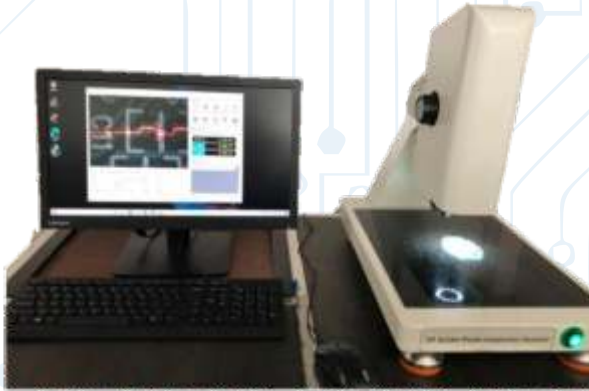
Model	QH-ASM331R
Moving Range of X/Y/Z(mm)	300/300/100/360°
Maximum Production Size (mm)	280*280
Heating Power	150W/200W
Temperature Range	25-550
Temperature Control Accuracy	±2
Moving Speed(mm/s)	X/Y/Z: 0-500mm/s R: 0-720°/s
Repeated Accuracy(mm/Axis)	±0.02
Maximum Load(kg)	10
Programming Method	Teaching Box
Control System	Single-Chip Microcomputer
Driving Mode	Stepping Motor +Belt or Servo Motor + Ball Screw
External Control Port	RS232
Machine Size(mm)	660*580*800
Machine Weight(kg)	54

Automatic Optical Inspection (AOI) Machine 880

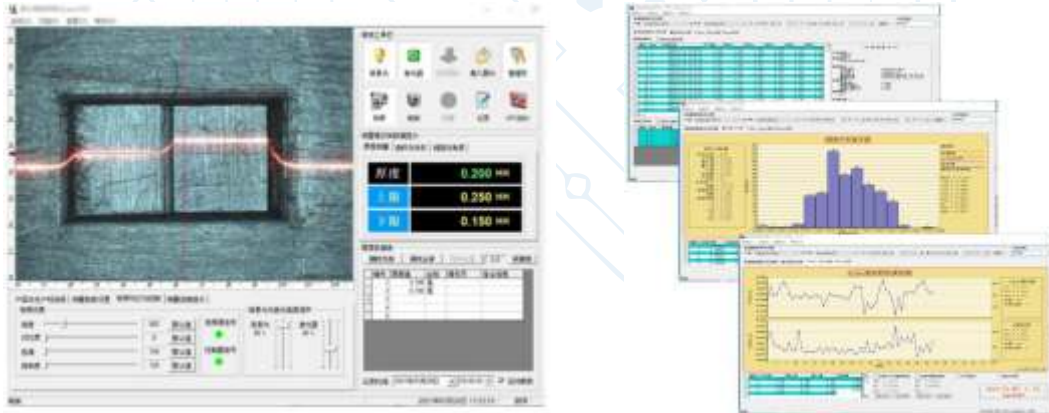


	Model	AOI EKT-VT-880
PCB Application	Applicable Process	After stencil printing, after/before hot air reflow Can test both sides and multiple PCBs simultaneously
	PCB Dimension	20×20mm-450×350mm
	PCB Thickness	0.3-5.0mm
	PCB Space	Top: ≤30mm ; Bottom: ≤45mm
Inspection Items	After Stencil Printing	Solder paste unavailability, insufficient or excessive solder paste, solder paste misalignment, solder paste bridging, stain, scratch and so on.
	Before or after Reflow Soldering	Missing or excessive component, misalignment, uneven, edging defect, opposite mounting , wrong polarity, wrong or bad components.
	Before or after DIP wave soldering	Excessive or missing component, empty soldering, solder balls, solder misalignment, edging defect, bridging, IC NG, copper stain etc.
Visual System	Image System	CCD camera, German Basler 500 million px
	Lighting System	Three-channel white led light source or RGB light source
	Resolution Ratio	18um(FOV dimension : 28.8 mm×21.6 mm)
	Inspection Mode	Color calculation, color extraction, gray -scale operations, image matching, etc
Mechanical System	X/Y Driving System	AC servo motor, Precision grinding ball screw
	PCB Fixing Mode	Auto Fixture
	Positioning Accuracy	<8 um
	Moving Speed	800mm/s(MAX)
	Orbital Adjustment	Manual
Software System	Computing System	Windows XP, ram 16GB
	Interface Language	Chinese/English optional
	Inspection Output	PCB ID, PCB Description, Component Description, Defect Description, Defect Image
	Power	AC220±10%, 50/60HZ,1KW
	Operation Temperature	-10 -40°C
	Operation Humidity	20-90%RH non condensing
	Machine Dimension	900(L)*1100(W)*1300(H)mm

Table Top Solder Paste Inspection Machine



Model	QS100
Measurement Principle	Non-Contact, Laser Line
Measurement Accuracy	± 0.001mm
Repetitive Measurement Accuracy	± 0.002mm
Base size	20mm*430mm
Platform	Fixed Marble Platform
Imaging System	VGA HD Camera (6 million pixels)
Optical Magnification	25-110X (5-level adjustable)
Measurement Light Source	High-Precision Red Laser Line
Power Supply	AC220V, 50Hz
System Weight	Approximately 30Kg
Lighting System	Adjustable brightness circular LED light source (PC controls brightness)
Camera Resolution	3072x2048 (Pixel)



Reflow Profiler KIC 2000



Model	KIC 2000
Measure range	-150~1050°C
Temperature measurement resolution	0.1°C
Instrument size	260*80*20mm
Insulation box size	330*93*34mm
Accuracy	+/-1.2°C
Resolution	0.3°C~0.1°C
Internal operating temperature	0°C~105°C
Applicable thermocouple	K type thermocouple
Power requirement	9 volt alkaline battery



Unit No. 212, 203, Master Mind I, Royal Palms, Aarey Colony,
Goregaon (East), Mumbai - 400 065.

Tel.: +91-22-35637352

Office Mob.: 96531 27742

Mobile : +91 97022 21244 & +91 90222 21244

E-mail : sales@mrtechnology.in

Website : www.mrtechnology.in

OUR COMMITMENT :
RELIABLE QUALITY / TIMELY DELIVERY / PERFECT SERVICE