

AC SERVO MOTORS AND DRIVES

3 PHASE IP65 AC SERVO SYSTEM WHICH GIVES HIGH TORQUE AND HIGH RPM

BLUESTONE SERIES

FRAME SIZE-80mm,130mm & 180mm (0.4KW-7.5KW)

AC Servo Motors are closed loop system and are comprised of several part namely a servo motor, amplifier or driver and one digital encoder or resolver. A servo motor is a self contained electrical device that rotate parts of a machine with high efficiency and with great precision. It is commonly used in cnc machines, assembly lines, automatic machine etc.



*Flame Proof
3 Phase AC Servo Motor
With Brake*



*17Bit Absolute Encoder
Ethercat DriveS
Servo Motor*



*Incremental Encoder
3 Phase AC Servo Motor*



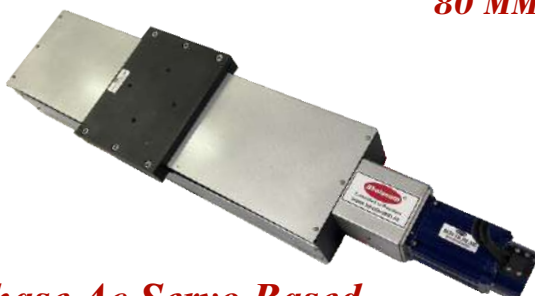
*Incremental Encoder
3 Phase AC Servo Motor
80 MM FRAME SIZE*



*Incremental Encoder
3 Phase AC Servo Motor
with Right Angle Planetary Gear
80 MM FRAME SIZE*



*Flame Proof
3 Phase AC Servo Motor*



*3 Phase Ac Servo Based
Ball Screw Slide*



*3 Phase Ac Servo Based
Rod Style Linear Actuator*

1. Available in IP66, IP67 and IP68 protection.
2. Available in Flameproof design both gas and dust protection.
3. Available with brake.
4. Available with Planetary and Helical Gearbox.
5. Available with right angle planetary gear box
6. Available with Rotary Table.
7. Available with rotary indexing table.
8. Available with ball screw X slide
9. Available with ball screw X-Y Slide.
10. Available with ball screw XYZ Slide
11. Available with ball screw XXYZ Slide.
12. Available with Belt Driven Slide with high speed 5000mm/sec.
13. Available with Rod style linear Actuator.
14. Available with high Temperature up to 120 degree celsius .
15. Available with EMC & CE Marked Servo Motor
16. Available with sub Zero Servo motor
17. Available with Hollow Shaft Servo Motor
16. Available with customization in shaft length, cable lengths etc.



***Flame Proof 3 Phase AC Servo Motor
BH-180-SM-INC-4.5KW-BRK-PL-60***



***3 Phase Ac Servo Based
Rod Style Linear Actuator***



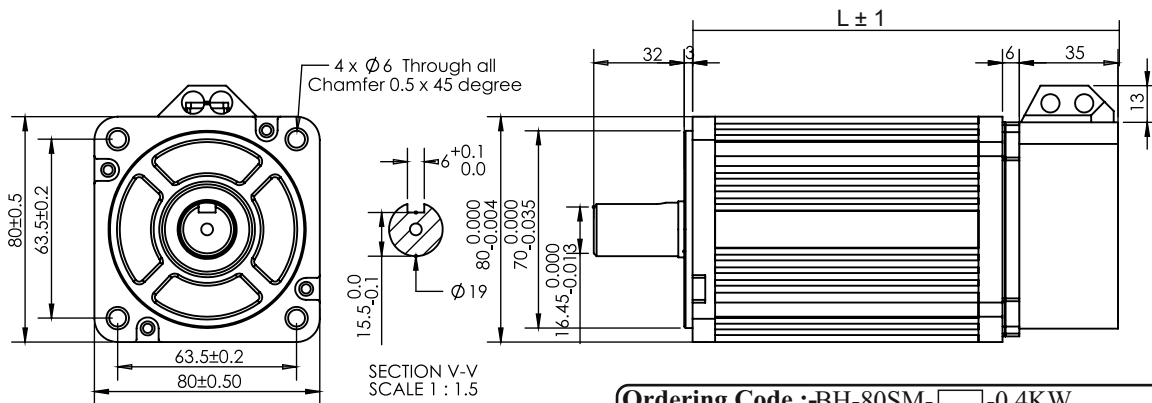
***AC Servo Motor Rotary
Table For Heavy Loads***

Incremental Encoder/17Bit Absolute Encoder Pulse & Analog Drive

/17Bit Absolute Encoder Ethercat drives

3 PHASE AC SERVO MOTORS

80 MM FRAME SIZE

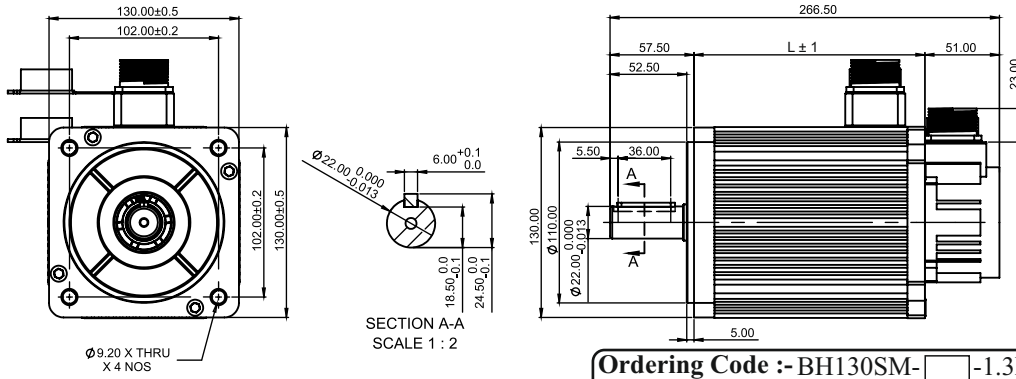


Ordering Code :-BH-80SM-□-0.4KW

INC:- For Incremental Encoder Pulse /Analog Drive
ABS:- For 17 Bit Absolute Encoder Pulse/Analog Drive
ECAT:- Ethercat Drive

MOTOR MODEL	BH-80SM-0.4KW	BH-80SM-0.75KW	BH-80SM-1KW
Rated Power (W)	400	750	1000
Rated Voltage (V)	230	230	230
Rated Current (A)	2	3	4.4
Peak Current (A)	6	9	13.2
Rated Speed (RPM)	3000	3000	2500
Rated Torque (Nm)	1.27	2.39	4
Peak Torque (N.M)	3.8	7.1	12
Back emf(v/1000r/min)	40	48	56
Torque Coefficient (Nm/A)	0.64	0.8	0.9
Rotor Inertia (Kg.MP)	1.05X10 ⁻⁴	1.82X10 ⁻⁴	2.97X10 ⁻⁴
Winding Resistance (Ω)	4.44	2.88	1.83
Winding Inductance (mH)	7.93	6.4	4.72
Electrical Time Constant(ms)	1.66	2.22	2.58
Weight (KG)	1.78	2.86	3.8
No of Encoder Lines (PPR)	2500	2500	2500
Insulation Class	Class(130 ^o c)	Class(130 ^o c)	Class(130 ^o c)
Safety Class	IP 65	IP 65	IP 65
Use Environment	Temperature; -20 ^o c to +40 ^o c, humidity; relative humidity<90%		
Type of drive	Pulse/Analog		
	17Bit Absolute - Pulse/Analog		
	17Bit Absolute - Ethercat		
Motor Length "L" (MM)	124	151	191
Motor length with brake(mm)	164	191	231

**Incremental Encoder/17Bit Absolute Encoder Pulse & Analog Drive
/17Bit Absolute Encoder Ethercat drives
3 PHASE AC SERVO MOTORS
130 MM FRAME SIZE**

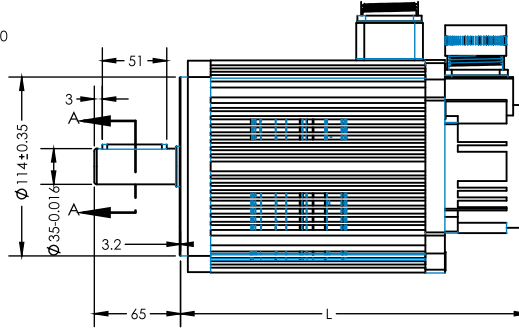
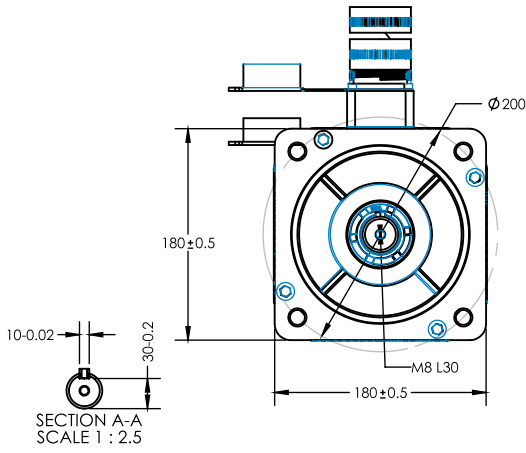


Ordering Code :- BH130SM--1.3KW
 INC:- For Incremental Encoder Pulse /Analog Drive
 ABS:- For 17 Bit Absolute Encoder Pulse/Analog Drive
 ECAT:- Ethercat Drive

MOTOR MODEL	BH-130SM-1.3KW	BH-130SM-1.5KW	BH-130SM-2KW	BH-130SM-2.6KW	BH-130SM-3.8KW
Rated Power (KW)	1.3	1.5	2.0	2.6	3.8
Rated Voltage (V)	230	230	230	230	230
Rated Current (A)	5	6	7.5	10	13.5
Peak Current (A)	15	18	22.5	28	27
Rated Speed (RPM)	2500	2500	2500	2500	2500
Rated Torque (Nm)	5	6	7.7	10	15
Peak Torque (N.M)	15	18	22	25	30
Back emf(v/1000r/min)	68	65	68	70	67
Torque Coefficient (Nm/A)	1.0	1.0	1.03	1.0	1.11
Rotor Inertia (Kg.MP)	1.06X10 ⁻³	1.26X10 ⁻³	1.53X10 ⁻³	1.94X10 ⁻³	2.77X10 ⁻³
Winding Resistance (Ω)	1.54	1.21	1.01	0.73	0.49
Winding Inductance (mH)	4.9	3.57	2.94	2.45	1.68
Electrical Time Constant(ms)	2.66	3.2	3.8	3.36	3.43
Weight (KG)	8.2	8.9	10	11.5	11.7
No of Encoder Lines (PPR)	2500	2500	2500	2500	2500
Insulation Class	Class F(130 ⁰ c)	Class F(130 ⁰ c)	Class F(130 ⁰ c)	Class F(130 ⁰ c)	Class F(130 ⁰ c)
Safety Class	IP 65	IP 65	IP 65	IP 65	IP 65
Use Environment	Temperature; -20 ⁰ c to +40 ⁰ c,humidity; relative humidity<90%				
Type of drive	Pulse/Analog				
	17Bit Absolute - Pulse/Analog				
	17Bit Absolute - Ethercat				
Motor Length "L" (MM)	171	179	192	209	231
Motor length with brake	233	241	254	271	293

**Incremental Encoder/17Bit Absolute Encoder Pulse & Analog Drive
/17Bit Absolute Encoder Ethercat drives**

**3 PHASE AC SERVO MOTORS
180 MM FRAME SIZE**



Ordering Code :-BH180SM- -4.5KW
 INC:- For Incremental Encoder Pulse /Analog Drive
 ABS:- For 17 Bit Absolute Encoder Pulse/Analog Drive
 ECAT:- Ethercat Drive

MOTOR MODEL	BH-180SM-4.5KW	BH-180SM-5.5KW	BH-180SM-7.5KW
Rated Power (KW)	4.5	5.5	7.5
Rated Voltage (V)	230	230	380
Rated Current (A)	16	24	20
Peak Current (A)	32	48	40
Rated Speed (RPM)	2000	1500	1500
Rated Torque (Nm)	21.5	35	48
Peak Torque (N.M)	53	70	96
Back emf(v/1000r/min)	97	90	156
Torque Coefficient (Nm/A)	1.58	1.45	2.4
Rotor Inertia (Kg.MP)	3.8X10 ⁻³	8.6X10 ⁻³	9.5X10 ⁻³
Winding Resistance (Ω)	0.4	0.14	0.27
Winding Inductance (mH)	2.42	1.0	2.14
Electrical Time Constant(ms)	6	7.14	7.8
Weight (KG)	20.5	30.5	40
No of Encoder Lines (PPR)	2500	2500	2500
Insulation Class	Class F(155 ⁰ c)	Class F(155 ⁰ c)	Class F(155 ⁰ c)
Safety Class	IP 65	IP 65	IP 65
Use Environment	Temperature; -20 ⁰ c to +40 ⁰ c, humidity; relative humidity<90%		
Type of drive	Pulse/Analog		
	17Bit Absolute - Pulse/Analog		
	17Bit Absolute - Ethercat		
Motor Length "L" (MM)	243	292	346
Motor length with brake	315	364	418

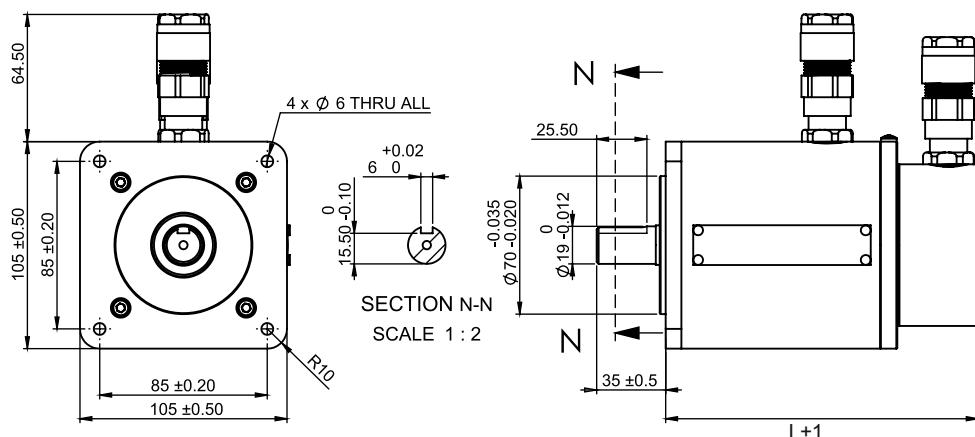
Explosion Proof (Flame Proof) Gas & Dust Group

Incremental Encoder/17Bit Absolute Encoder Pulse & Analog Drive

/17Bit Absolute Encoder Ethercat drives

3 PHASE AC SERVO MOTORS

80 MM FRAME SIZE



BHOLANATH FLP servo motors can contain any explosion originating within its housing and prevent sparks from within its housing from igniting vapours, gases in the air surrounding it. BHOLANATH FLP Motors are available in class 1, zone 1, group A, B & C zone 21 dust group.
CERTIFICATIONS – PESO, CMRI, BIS, IECEX
INDUSTRIAL APPLICATIONS -- Petro Chemicals & Chemicals, Oil Mines & Rigs, Fertilizers, Saw Mills, Solvent extraction plants, Paints & Varnish Industry, LPG Bottling plants, Agro Chemicals, Drugs & Pharmaceuticals & General Industry.

Ordering Code :-BH-80SM-□-0.4KW
INC:- For Incremental Encoder Pulse /Analog Drive
ABS:- For 17 Bit Absolute Encoder Pulse/Analog Drive
ECAT:- Ethercat Drive

MOTOR MODEL	BH-80SM-0.4KW-FLP	BH-80SM-0.75KW-FLP	BH-80SM-1KW-FLP
Rated Power (W)	400	750	1000
Rated Voltage (V)	230	230	230
Rated Current (A)	2	3	4.4
Peak Current (A)	6	9	13.2
Rated Speed (RPM)	3000	3000	2500
Rated Torque (Nm)	1.27	2.39	4
Peak Torque (N.M)	3.8	7.1	12
Back emf(v/1000r/min)	40	48	56
Torque Coefficient (Nm/A)	0.64	0.8	0.9
Rotor Inertia (Kg.MP)	1.05X10 ⁻⁴	1.82X10 ⁻⁴	2.97X10 ⁻⁴
Winding Resistance (Ω)	4.44	2.88	1.83
Winding Inductance (mH)	7.93	6.4	4.72
Electrical Time Constant(ms)	1.66	2.22	2.58
Weight (KG)	1.78	2.86	3.8
No of Encoder Lines (PPR)	2500	2500	2500
Insulation Class	Class(130 ^o c)	Class(130 ^o c)	Class(130 ^o c)
Safety Class	IP 65	IP 65	IP 65
Use Environment	Temperature; -20 ^o c to +40 ^o c, humidity; relative humidity < 90%		
Type of drive	Pulse/Analog		
	17Bit Absolute - Pulse/Analog		
	17Bit Absolute - Ethercat		
Motor Length "L" (MM)	158.5	185.5	225.5
Motor length with brake(mm)	218.5	245.5	285.5

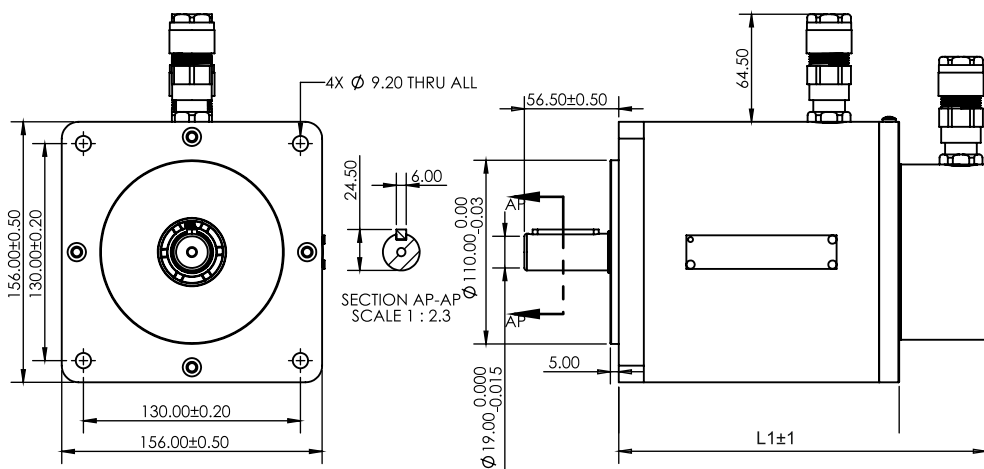
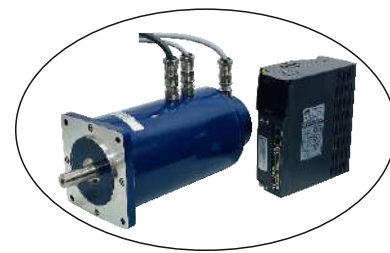
Explosion Proof (Flame Proof) Gas & Dust Group

Incremental Encoder/17Bit Absolute Encoder Pulse & Analog Drive

/17Bit Absolute Encoder Ethercat drives

3 PHASE AC SERVO MOTORS

130 MM FRAME SIZE



BHOLANATH FLP servo motors can contain any explosion originating within its housing and prevent sparks from within its housing from igniting vapours, gases in the air surrounding it. BHOLANATH FLP Motors are available in class 1, zone 1, group A, B & C zone 21 dust group.
CERTIFICATIONS – PESO, CMRI, BIS, IECEX
INDUSTRIAL APPLICATIONS -- Petro Chemicals & Chemicals, Oil Mines & Rigs, Fertilizers, Saw Mills, Solvent extraction plants, Paints & Varnish Industry, LPG Bottling plants, Agro Chemicals, Drugs & Pharmaceuticals & General Industry.

Ordering Code :-BH1300SM-[]-1.3KW
INC:- For Incremental Encoder Pulse /Analog Drive
ABS:- For 17 Bit Absolute Encoder Pulse/Analog Drive
ECAT:- Ethercat Drive

MOTOR MODEL	BH-130SM-1.3KW -FLP	BH-130SM-1.5KW -FLP	BH-130SM-2KW -FLP	BH-130SM-2.6KW -FLP	BH-130SM-3.8KW -FLP
Rated Power (KW)	1.3	1.5	2.0	2.6	3.8
Rated Voltage (V)	230	230	230	230	230
Rated Current (A)	5	6	7.5	10	13.5
Peak Current (A)	15	18	22.5	28	27
Rated Speed (RPM)	2500	2500	2500	2500	2500
Rated Torque (Nm)	5	6	7.7	10	15
Peak Torque (N.M)	15	18	22	25	30
Back emf(v/1000r/min)	68	65	68	70	67
Torque Coefficient (Nm/A)	1.0	1.0	1.03	1.0	1.11
Rotor Inertia (Kg.MP)	1.06X10 ⁻³	1.26X10 ⁻³	1.53X10 ⁻³	1.94X10 ⁻³	2.77X10 ⁻³
Winding Resistance (Ω)	1.54	1.21	1.01	0.73	0.49
Winding Inductance (mH)	4.9	3.57	2.94	2.45	1.68
Electrical Time Constant(ms)	2.66	3.2	3.8	3.36	3.43
Weight (KG)	8.2	8.9	10	11.5	11.7
No of Encoder Lines (PPR)	2500	2500	2500	2500	2500
Insulation Class	Class F(130 ^o c)	Class F(130 ^o c)	Class F(130 ^o c)	Class F(130 ^o c)	Class F(130 ^o c)
Safety Class	IP 65	IP 65	IP 65	IP 65	IP 65
Use Environment	Temperature; -20 ^o c to +40 ^o c, humidity; relative humidity<90%				
Motor Length "L" (mm)	199	207	220	237	259
Motor length with brake (mm)	259.5	267.5	280.5	297.5	319.5

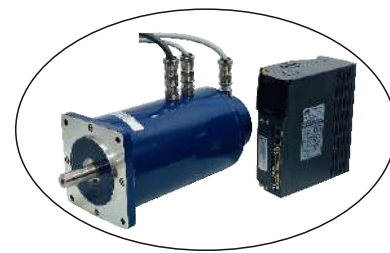
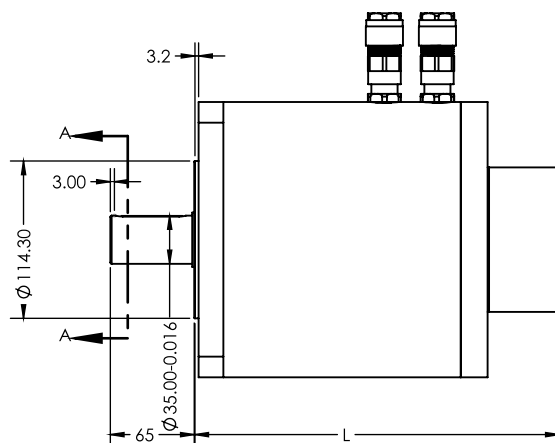
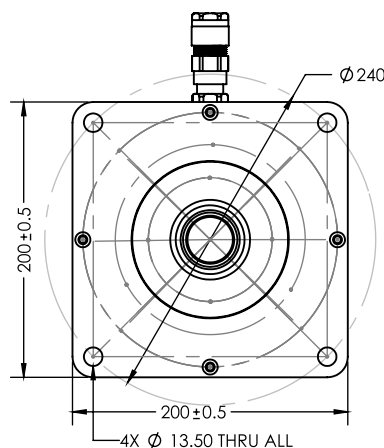
Explosion Proof (Flame Proof) Gas & Dust Group

Incremental Encoder/17Bit Absolute Encoder Pulse & Analog Drive

/17Bit Absolute Encoder Ethercat drives

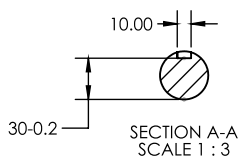
3 PHASE AC SERVO MOTORS

180 MM FRAME SIZE



BHOLANATH FLP servo motors can contain any explosion originating within its housing and prevent sparks from within its housing from igniting vapours, gases in the air surrounding it. BHOLANATH FLP Motors are available in class 1, zone 1, group A, B & C zone 21 dust group.
CERTIFICATIONS – PESO, CMRI, BIS, IECEX
INDUSTRIAL APPLICATIONS -- Petro Chemicals & Chemicals, Oil Mines & Rigs, Fertilizers, Saw Mills, Solvent extraction plants, Paints & Varnish Industry, LPG Bottling plants, Agro Chemicals, Drugs & Pharmaceuticals & General Industry.

Ordering Code :-BH180SM-□-4.5KW
INC:- For Incremental Encoder Pulse /Analog Drive
ABS:- For 17 Bit Absolute Encoder Pulse/Analog Drive
ECAT:- Ethercat Drive



MOTOR MODEL	BH-180SM-4.5KW -FLP	BH-180SM-5.5KW -FLP	BH-180SM-7.5KW -FLP
Rated Power (KW)	4.5	5.5	7.5
Rated Voltage (V)	230	230	380
Rated Current (A)	16	24	20
Peak Current (A)	32	48	40
Rated Speed (RPM)	2000	1500	1500
Rated Torque (Nm)	21.5	35	48
Peak Torque (N.M)	53	70	96
Back emf(v/1000r/min)	97	90	156
Torque Coefficient (Nm/A)	1.58	1.45	2.4
Rotor Inertia (Kg.MP)	3.8X10 ⁻³	8.6X10 ⁻³	9.5X10 ⁻³
Winding Resistance (Ω)	0.4	0.14	0.27
Winding Inductance (mH)	2.42	1.0	2.14
Electrical Time Constant(ms)	6	7.14	7.8
Weight (KG)	20.5	30.5	40
No of Encoder Lines (PPR)	2500	2500	2500
Insulation Class	Class F(155 ⁰ c)	Class F(130 ⁰ c)	Class F(130 ⁰ c)
Safety Class	IP 65	IP 65	IP 65
Use Environment	Temperature; -20 ⁰ c to +40 ⁰ c, humidity; relative humidity < 90%		
Motor Length "L" (mm)	243	292	346
Motor length with brake (mm)	315	364	418

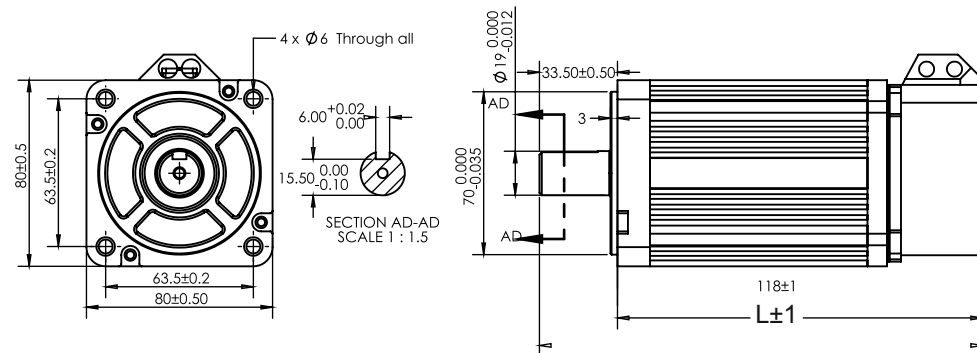
IP 68 AC Servo Motor

Incremental Encoder/17Bit Absolute Encoder Pulse & Analog Drive

/17Bit Absolute Encoder Ethercat drives

3 PHASE AC SERVO MOTORS

80 MM FRAME SIZE



PROTECTED FROM TOTAL DUST INGRESS & PROTECTED FROM LONG TERM IMMERSION UP TO A SPECIFIED PRESSURE

IP 68 Servo motor

The first two letters IP stands for - Ingress Protection Rating. The Number 6 stands for - Totally protected against dust infiltration.

The Number 8 stands for - Protection against immersion in water (Bholanath IP 68 servo motors are certified upto 10 mtrs [1bar Pressure] submerged in water.)

Bholanath IP 68 motors can be used in all submersible applications, pump applications, submerged valve operating applications, under water machinery and general applications.

Ordering Code :-BH-80SM-[]-0.4KW-IP68

INC- For Incremental Encoder Pulse /Analog Drive
ABS- For 17 Bit Absolute Encoder Pulse/Analog Drive
ECAT:- Ethercat Drive

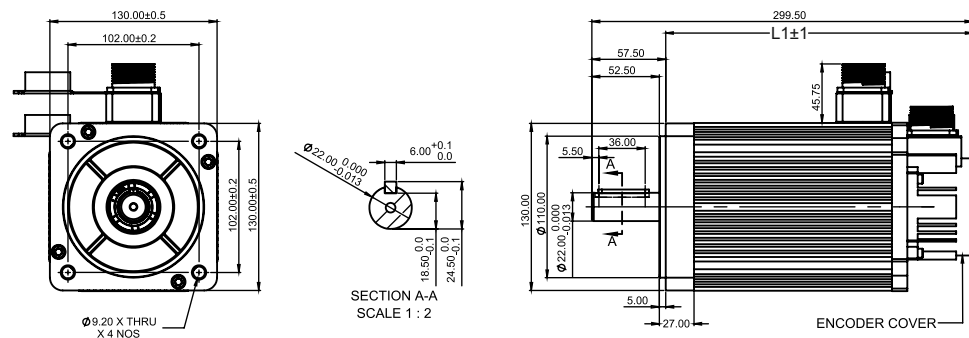
MOTOR MODEL	BH-80SM-0.4KW-IP68	BH-80SM-0.75KW-IP68	BH-80SM-1KW-IP68
Rated Power (W)	400	750	1000
Rated Voltage (V)	230	230	230
Rated Current (A)	2	3	4.4
Peak Current (A)	6	9	13.2
Rated Speed (RPM)	3000	3000	2500
Rated Torque (Nm)	1.27	2.39	4
Peak Torque (N.M)	3.8	7.1	12
Back emf(v/1000r/min)	40	48	56
Torque Coefficient (Nm/A)	0.64	0.8	0.9
Rotor Inertia (Kg.MP)	1.05X10 ⁻⁴	1.82X10 ⁻⁴	2.97X10 ⁻⁴
Winding Resistance (Ω)	4.44	2.88	1.83
Winding Inductance (mH)	7.93	6.4	4.72
Electrical Time Constant(ms)	1.66	2.22	2.58
Weight (KG)	1.78	2.86	3.8
No of Encoder Lines (PPR)	2500	2500	2500
Insulation Class	Class(130 ^o c)	Class(130 ^o c)	Class(130 ^o c)
Safety Class	IP 65	IP 65	IP 65
Use Environment	Temperature; -20 ^o c to +40 ^o c, humidity; relative humidity<90%		
Type of drive	Pulse/Analog		
	17Bit Absolute - Pulse/Analog		
	17Bit Absolute - Ethercat		
Motor Length "L" (MM)	132	159	198
Motor length with brake(mm)	172	199	239

IP 68 AC Servo Motor

Incremental Encoder/17Bit Absolute Encoder Pulse & Analog Drive /17Bit Absolute Encoder Ethercat drives

3 PHASE AC SERVO MOTORS

130 MM FRAME SIZE



PROTECTED FROM TOTAL DUST INGRESS & PROTECTED FROM LONG TERM IMMERSION UP TO A SPECIFIED PRESSURE

IP 68 Servo motor
 The first two letters IP stands for - Ingress Protection Rating. The Number 6 stands for - Totally protected against dust infiltration. The Number 8 stands for - Protection against immersion in water (Bholanath IP 68 servo motors are certified upto 10 mtrs [1bar Pressure] submerged in water.)

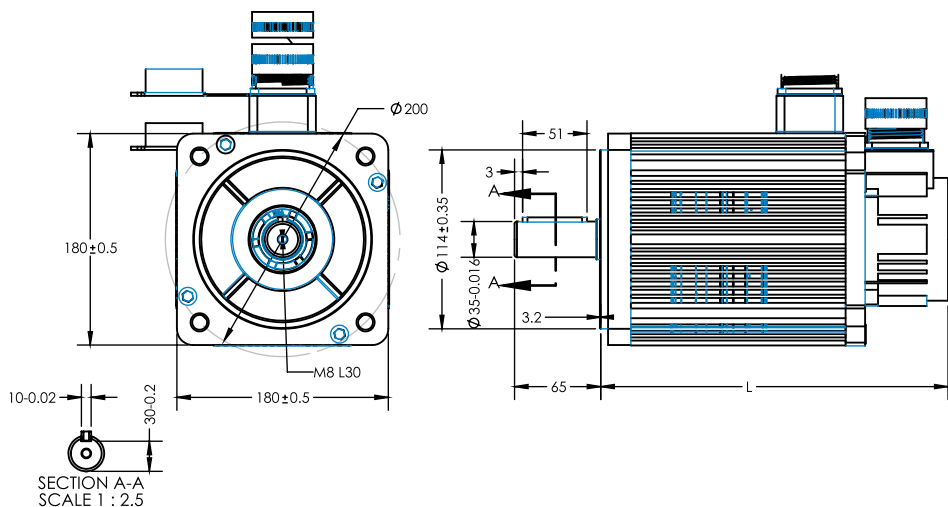
Bholanath IP 68 motors can be used in all submersible applications, pump applications, submerged valve operating applications, under water machinery and general applications.

Ordering Code :- BH130SM--1.3KW
 INC:- For Incremental Encoder Pulse /Analog Drive
 ABS:- For 17 Bit Absolute Encoder Pulse/Analog Drive
 ECAT:- Ethercat Drive

MOTOR MODEL	BH-130SM 1.3KW -IP68	BH-130SM-1.5KW -IP68	BH-130SM-2KW -IP68	BH-130SM-2.6KW -IP68	BH-130SM-3.8KW -IP68
Rated Power (KW)	1.3	1.5	2.0	2.6	3.8
Rated Voltage (V)	230	230	230	230	230
Rated Current (A)	5	6	7.5	10	13.5
Peak Current (A)	15	18	22.5	28	27
Rated Speed (RPM)	2500	2500	2500	2500	2500
Rated Torque (Nm)	5	6	7.7	10	15
Peak Torque (N.M)	15	18	22	25	30
Back emf(v/1000r/min)	68	65	68	70	67
Torque Coefficient (Nm/A)	1.0	1.0	1.03	1.0	1.11
Rotor Inertia (Kg.MP)	1.06X10 ⁻³	1.26X10 ⁻³	1.53X10 ⁻³	1.94X10 ⁻³	2.77X10 ⁻³
Winding Resistance (Ω)	1.54	1.21	1.01	0.73	0.49
Winding Inductance (mH)	4.9	3.57	2.94	2.45	1.68
Electrical Time Constant(ms)	2.66	3.2	3.8	3.36	3.43
Weight (KG)	8.2	8.9	10	11.5	11.7
No of Encoder Lines (PPR)	2500	2500	2500	2500	2500
Insulation Class	Class F(130 ⁰ c)	Class F(130 ⁰ c)	Class F(130 ⁰ c)	Class F(130 ⁰ c)	Class F(130 ⁰ c)
Safety Class	IP 65	IP 65	IP 65	IP 65	IP 65
Use Environment	Temperature; -20 ⁰ c to +40 ⁰ c, humidity; relative humidity<90%				
Motor Length "L1" (mm)	182	190	203	220	243
Motor length with brake(mm)	244	252	265	282	304

IP 68 AC Servo Motor

Incremental Encoder/17Bit Absolute Encoder Pulse & Analog Drive
/17Bit Absolute Encoder Ethercat drives
3 PHASE AC SERVO MOTORS
180 MM FRAME SIZE



PROTECTED FROM TOTAL DUST INGRESS & PROTECTED FROM LONG TERM IMMERSION UP TO A SPECIFIED PRESSURE

IP 68 Servo motor

The first two letters IP stands for - Ingress Protection Rating. The Number 6 stands for - Totally protected against dust infiltration.

The Number 8 stands for - Protection against immersion in water (Bholanath IP 68 servo motors are certified upto 10 mtrs [1bar Pressure] submerged in water.)

Bholanath IP 68 motors can be used in all submersible applications, pump applications, submerged valve operating applications, under water machinery and general applications.

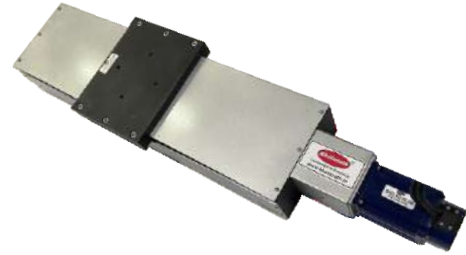
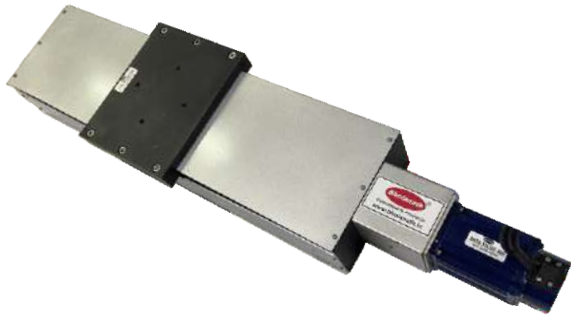
Ordering Code :-BH180SM-□-4.5KW

INC:- For Incremental Encoder Pulse /Analog Drive
ABS:- For 17 Bit Absolute Encoder Pulse/Analog Drive
ECAT:- Ethercat Drive

MOTOR MODEL	BH-180SM- 4.5KW -IP68	BH-180SM-5.5KW -IP68	BH-180SM-7.5KW -IP68
Rated Power (KW)	4.5	5.5	7.5
Rated Voltage (V)	230	230	380
Rated Current (A)	16	24	20
Peak Current (A)	32	48	40
Rated Speed (RPM)	2000	1500	1500
Rated Torque (Nm)	21.5	35	48
Peak Torque (N.M)	53	70	96
Back emf(v/1000r/min)	97	90	156
Torque Coefficient (Nm/A)	1.58	1.45	2.4
Rotor Inertia (Kg.MP)	3.8X10 ⁻³	8.6X10 ⁻³	9.5X10 ⁻³
Winding Resistance (Ω)	0.4	0.14	0.27
Winding Inductance (mH)	2.42	1.0	2.14
Electrical Time Constant(ms)	6	7.14	7.8
Weight (KG)	20.5	30.5	40
No of Encoder Lines (PPR)	2500	2500	2500
Insulation Class	Class F(155 ⁰ c)	Class F(130 ⁰ c)	Class F(130 ⁰ c)
Safety Class	IP 65	IP 65	IP 65
Use Environment	Temperature; -20 ⁰ c to +40 ⁰ c, humidity; relative humidity<90%		
Motor Length "L" (mm)	254	303	357
Motor length with brake (mm)	326	375	429

AC Servo Motor Linear Heavy Load Ball Screw X - Slide

These slides are made of high precision ball screws, LM guides and driven by Bholanath AC Servo Motors. Standard length from 150 mm to 1000 mm are available. Custom made different lengths are available on order. Heavy load, light load and light load high speed , IP68,FLP slides are available.



Sr. No	Model No.	Travel length (mm)	Total Load Capacity (Kg)	Feed speed (mm/sec)	Positioning Accuracy (mm)	Total Weight of Slides (Kg)
1	BHBS -SM- XSLIDE-150	150	0 to 70	0 to 150	0.01	7
2	BHBS-SM-XSLIDE-300	300	0 to100	0 to 300	0.01	12
3	BHBS-SM-XSLIDE-500	500	0 to 150	0 to 300	0.01	45
4	BHBS-SM-XSLIDE-1000	1000	0 to 200	0 to 300	0.01	75

AC Servo Motor LINEAR XY HEAVY LOAD BALL SCREW SLIDE

These slides are made of high precision ball screws, LM guides and driven by Bholanath Ac Servo Motors. Standard length from 150 mm to 1000 mm are available. Custom made different lengths are available on order. Heavy load, light load and light load high speed, IP68, FLP slides are available.



Sr. No	Model No.	Travel length (mm)	Total Load Capacity (Kg)	Feed speed (mm/sec)	Positioning Accuracy (mm)	Total Weight of Slides (Kg)
1	BHBS-SM-X-Y SLIDE-150	150x150	0 to 70	0 to 150	0.01	20
2	BHBS-SM-X-Y SLIDE-300	300X300	0 to 100	0 to 300	0.01	30
3	BHBS-SM-X-Y SLIDE-500	500X500	0 to 150	0 to 300	0.01	130
4	BHBS-SM-X-Y SLIDE-1000	1000X1000	0 to 200	0 to 300	0.01	200

AC Servo Motor Linear belt driven X slides

For high speed movement requirements belt drives actuators are widely used. These slides are made up of high tensile strength timing belt, timing pulleys, LM guides with **Bholanath** 3 Phase AC servo motors. Custom made different lengths and speeds are available on order.



Sr. No	Model No.	Travel length (mm)	Total Load Capacity (Kg)	Feed speed (mm/sec)	Positioning Accuracy (mm)	Total Weight of Slides (Kg)
1	BH80SM-BD-XSLIDE-300	300	0 to 1.5	0 to 2000	0.05	10
2	BH80SM-BD-XSLIDE-500	500	0 to 1.5	0 to 2000	0.05	15
3	BH80SM-BD-XSLIDE-1000	1000	0 to 1.5	0 to 2000	0.05	20
4	BH80SM-BD-XSLIDE-1500	1500	0 to 1.5	0 to 2000	0.05	25
5	BH80SMPL-BD-XSLIDE-300	300	0 to 15	0 to 1500	0.05	12
6	BH80SMPL-BD-XSLIDE-500	500	0 to 15	0 to 1500	0.05	15
7	BH80SMPL-BD-XSLIDE-1000	1000	0 to 15	0 to 1500	0.05	12
8	BH80SMPL-BD-XSLIDE-1500	1500	0 to 15	0 to 1500	0.05	23
9	BH130SM-BD-XSLIDE-300	300	0 to 8	0 to 5000	0.05	20
10	BH130SM-BD-XSLIDE-500	500	0 to 12	0 to 5000	0.05	30
11	BH130SM-BD-XSLIDE-1000	1000	0 to 15	0 to 5000	0.05	30
12	BH130SM-BD-XSLIDE-1500	1500	0 to 20	0 to 5000	0.05	40
13	BH130SMPL-BD-XSLIDE-300	300	0 to 40	0 to 1000	0.05	26
14	BH130SMPL-BD-XSLIDE-500	500	0 to 60	0 to 1000	0.05	30
15	BH130SMPL-BD-XSLIDE-1000	1000	0 to 70	0 to 1000	0.05	40
16	BH130SMPL-BD-XSLIDE-1500	1500	0 to 90	0 to 1000	0.05	60

AC Servo Motor Rod Style Linear Actuator

Rod Style Linear Actuator - Replacement For Hydraulic Cylinders (inline)

Sr.No	Model No	Force (N)	Horizontal Load (tons)	Feed Speed (mm/sec)	Operating Voltage
1.	BH-SM-ERSLA-H-1000000N-15	1000000	2.5	15	230 VAC
2.	BH-SM-ERSLA-H-1200000N-15	1200000	3.0	15	230 VAC
3.	BH-SM-ERSLA-H-1750000N-15	1750000	3.5	15	230 VAC
4.	BH-SM-ERSLA-H-2500000N-15	2500000	5.0	15	230 VAC
5.	BH-SM-ERSLA-H-3600000N-15	3600000	6.0	15	230 VAC
6.	BH-SM-ERSLA-H-5250000N-7	5250000	7.5	7	230 VAC
7.	BH-SM-ERSLA-H-7000000N-7	7000000	10	7	230 VAC
8.	BH-SM-ERSLA-H-8400000N-7	8400000	12	7	230 VAC

Bholanath Ball Screw Electric Actuators For Industrial Applications

These are available in ready to use integrated motor with ball screw actuators. Ball screws from 20mm dia to 50 mm dia and force upto 3700 kgs (2035000 N), Max travel length 24 inches (600 mm). The feed speed is for actual working area, idle to and fro travel speed is adjustable at high speed to reduce travel time cycle. These are by default double acting electric actuators for use in all push and pull applications in industry.

- ★ Used in all kinds of industrial and medical machinery for To and Fro Travel
- ★ Robust and long lasting design
- ★ Replacement of Pneumatic and Hydraulic actuators
- ★ Controllable with micro controllers and PLCs
- ★ Torque Range -1N to 20000KN
- ★ Feed Speed Range -1 to 300MM/SEC



Electric Rod Style Linear Actuator For Industrial Application.

Sr.No	Model No	Force (N)	Horizontal Load (Kg)	Max Feed Speed (mm/sec)	Operating Voltage(DC)
1.	BH-SM-ERSLA-IA-30000N	30000	100	166	230VAC
2.	BH-SM-ERSLA-IA-18000N	18000	60	300	230VAC
3.	BH-SM-ERSLA-IA-10500N	10500	35	500	230VAC
4.	BH-SM-ERSLA-IA-120000N	120000	300	166	230VAC
5.	BH-SM-ERSLA-IA-60000N	60000	150	300	230VAC
6.	BH-SM-ERSLA-IA-24000N	24000	60	800	230VAC
7.	BH-SM-ERSLA-IA-675000N	675000	1500	30	230VAC
8.	BH-SM-ERSLA-IA-450000N	450000	1000	60	230VAC
9.	BH-SM-ERSLA-IA-135000N	135000	300	200	230VAC
10.	BH-SM-ERSLA-IA-1375000N	1375000	2500	30	230VAC
11.	BH-SM-ERSLA-IA-660000N	660000	1200	60	230VAC
12.	BH-SM-ERSLA-IA-176000N	176000	320	250	230VAC

AC Servo Motor Rotary Table For Heavy Loads

BHOLANATH ROTARY TABLE FOR HEAVY LOAD WITH HELICAL WORM GEARED BRAKE AC SERVO MOTOR. Robust and Precision Motion Controlled ROTARY TABLE With Helical Worm Geared Brake Ac Servo Motor And Bearing Housing. For Rotary Motion With Accurate & Immediate Response, Slow or Fast Speed, Jerk Free Positioning Accuracy ≤ 8 Arc Minute. The Permissible RPM is max 100, Degree of Protection IP 40. Load carrying capacity 0 to 400 kgs.

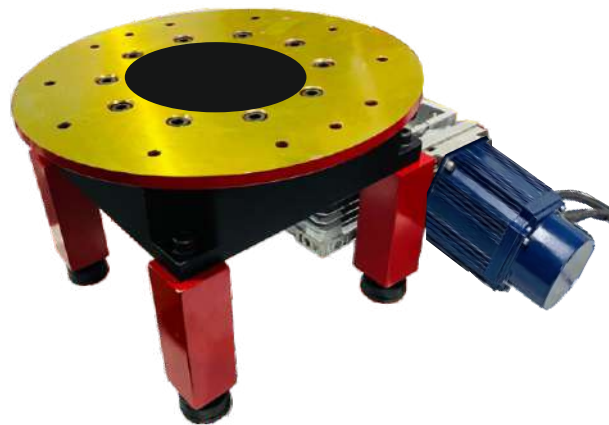


Sr. No	Model no.	Max Plate Diameter (MM)	Max Load capacity (Kg)	MAX O/P RPM
1.	BH-SM-RT-01	180	45	100
2.	BH-SM-RT-02	245	150	100
3.	BH-SM-RT-03	300	200	100
4.	BH-SM-RT-04	500	400	100

AC Servo Motor Hollow Rotary Table

This works with a Ac servo motor on the one side and hollow in the middle of the actuator which gives high strength. Large loads can easily be rotated with high accurate position.

Pre programmed Hollow Rotary actuators available.



Model No	POWER SUPPLY	CURRENT (A)	CENTRIC LOAD (Kg)	TANGENTIAL LOAD (kg)	DIAMETER OF PLATE (MM)
BH-SM-HR-03	230VAC	7.7	500	100	1000
BH-SM-HR-04	230VAC	15	1000	200	1000

BHOLANATH SERVO MOTOR MANUFACTURING FACILITY



OFFICE ADDRESS

BHOLANATH PRECISION ENGINEERING PVT. LTD.

1002 Opal Square S G Barve Road, Opposite Old Passport Office, Wagle Estate MIDC, Thane West - 400604
Tel No - 91-22-69181700 (100 LINES)

FACTORY ADDRESS

Plot No. 11, Gut No. 203, Dahagaon, Vasind (west), Wada Link Road, Off. Mumbai Nashik Highway, Opposite Jindal Steel Factory, Taluka- Shahapur, Dist. Thane- 421302, Maharashtra, India.

CONTACT US

Mumbai

Mr. Sandeep (Engineer) - 9970870967
Mr. Rahul (Engineer) - 7499011378
Mr. Ajit (Sr Manager) - 9892947889
Mr. Ambar (Director) - 992090825
Mr. Vivek (Director) - 9930514603
Mrs. Nisha (Director) - 9821671733
Mr. Anjan (GM) - 9619414647

Website: www.bholanath.in

North India

Mr. Dara (Engineer) - 9174589122

South India

Mr. Mutalim (Engineer) - 9356179586

East India

Mr. Gulam (Engineer) - 8276990794

Email Id: support@bholanath.in
nisha.k@bholanath.in

